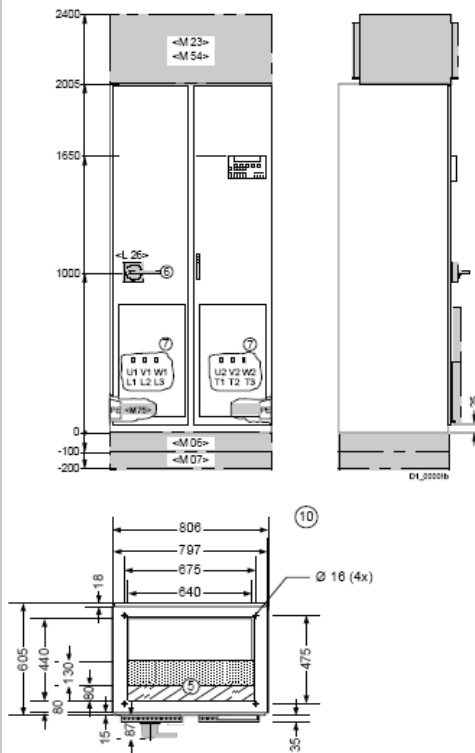


## SINAMICS G150 (type A)

### Dimension drawing 1:

380 V to 480 V      110 - 160 kW  
 500 V to 600 V      110 - 200 kW  
 660 V to 690 V      75 - 315 kW

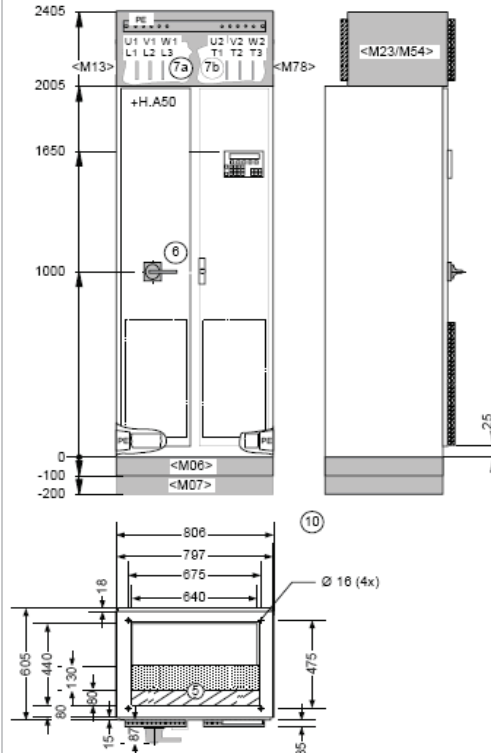
Power supply connection from below, motor connection from below



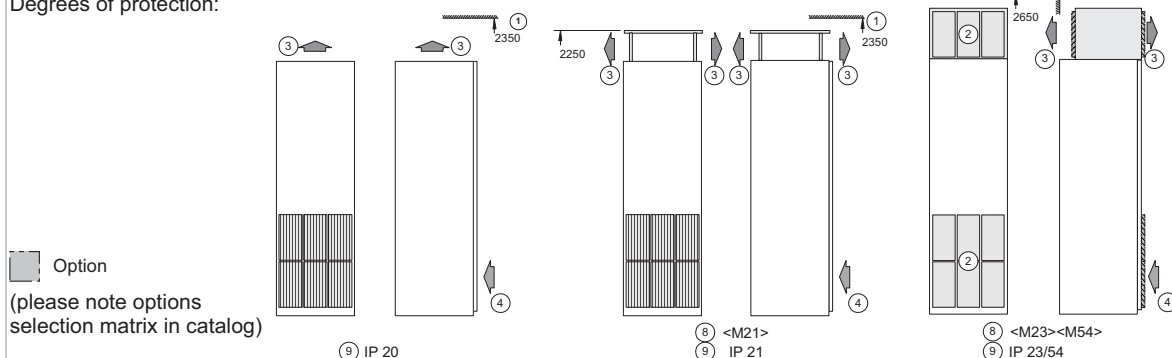
### Dimension drawing 2:

380 V to 480 V      110 - 160 kW  
 500 V to 600 V      110 - 200 kW  
 660 V to 690 V      75 - 315 kW

Power supply connection from above, motor connection from above



### Degrees of protection:



### Legend:

- |   |   |
|---|---|
| 1. Minimum ceiling height for wall mounting                 | 7. Power connection (7a: power supply, 7b: motor) |
| 2. Ventilation grid   | 8. Degree of protection option                    |
| 3. Air outlet area  | 9. Degree of protection IP20                      |
| 4. Air inlet area   | IP21      Option <M21>                            |
| 5. Cables can enter from below within hatched area          | IP23      Option <M23>                            |
| 6. Main circuit breaker, can be secured by padlock (option) | IP43      Option <M43>                            |
|   | IP54      Option <M54>                            |
|   | 10. Transport unit                                |

# Dimension Drawings

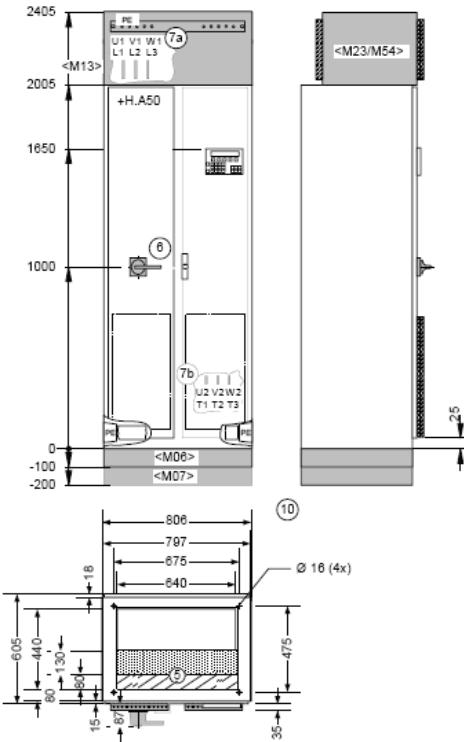
## Engineering Information

### SINAMICS G150 (type A), continued

#### Dimension drawing 3:

380 V to 480 V      110 - 160 kW  
 500 V to 600 V      110 - 200 kW  
 660 V to 690 V      75 - 315 kW

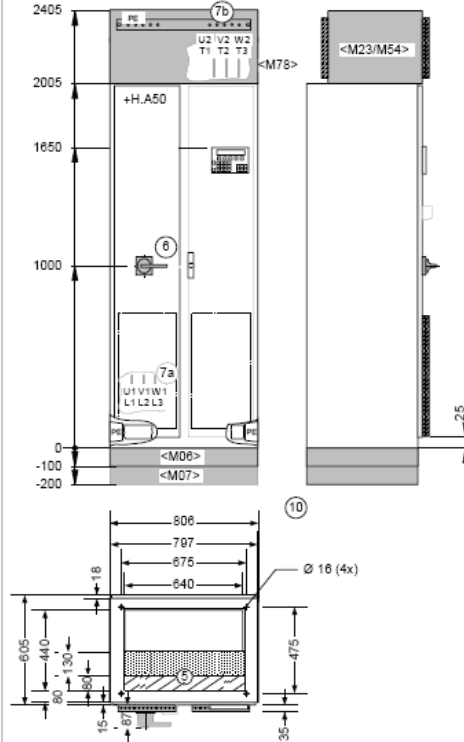
Power supply connection from above, motor connection from below



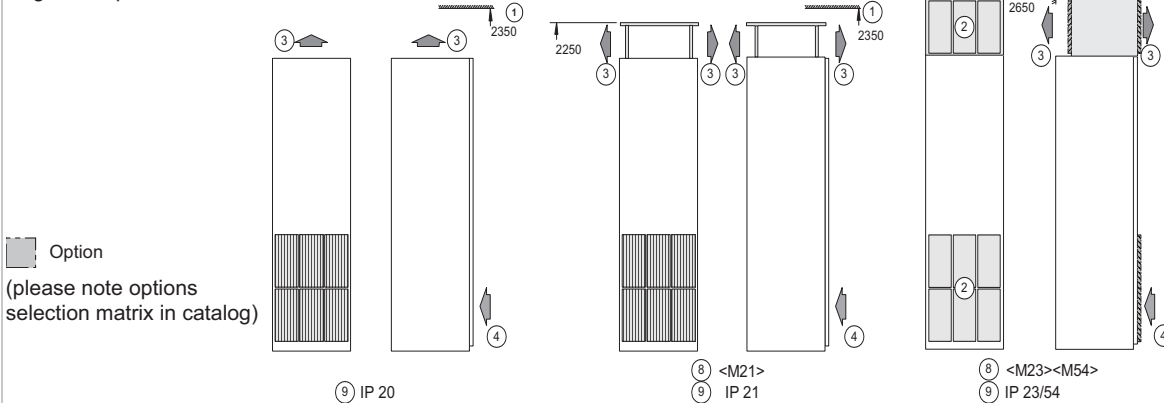
#### Dimension drawing 4:

380 V to 480 V      110 - 160 kW  
 500 V to 600 V      110 - 200 kW  
 660 V to 690 V      75 - 315 kW

Power supply connection from below, motor connection from above



#### Degrees of protection:



#### Legend:

- |   |   |
|---|---|
| 1. Minimum ceiling height for wall mounting                 | 7. Power connection (7a: power supply, 7b: motor) |
| 2. Ventilation grid   | 8. Degree of protection option                    |
| 3. Air outlet area  | 9. Degree of protection                           |
| 4. Air inlet area   | IP20  |
| 5. Cables can enter from below within hatched area          | IP21  |
| 6. Main circuit breaker, can be secured by padlock (option) | IP23  |
|   | IP43  |
|   | IP54  |
|   | Option <M21>                                      |
|   | Option <M23>                                      |
|   | Option <M43>                                      |
|   | Option <M54>                                      |
|   | 10. Transport unit                                |

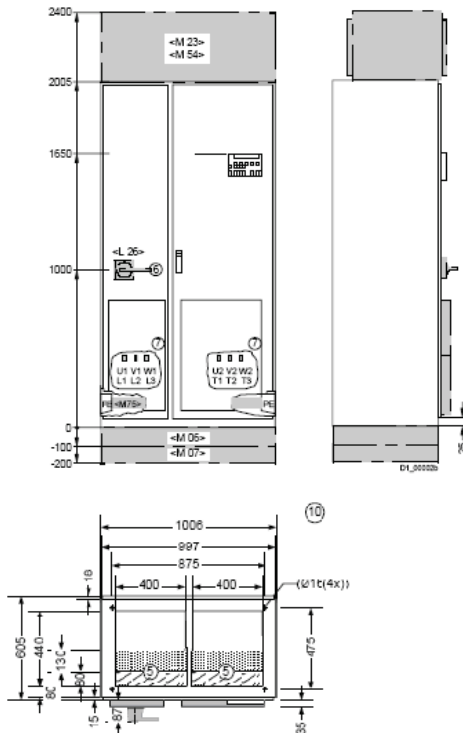
## SINAMICS G150 (type A), continued

**Dimension drawing 5:**

380 V to 480 V

200 - 250 kW

Power supply connection from below, motor connection from below

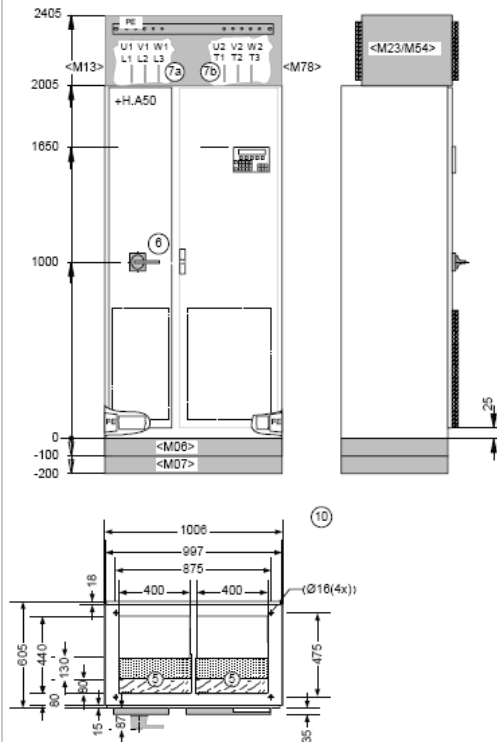


**Dimension drawing 6:**

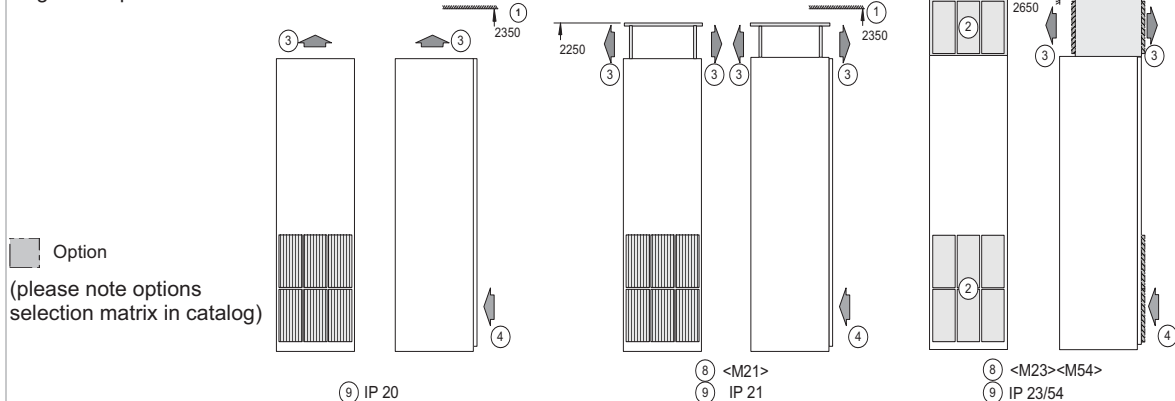
380 V to 480 V

200 - 250 kW

Power supply connection from above, motor connection from above



Degrees of protection:



**Legend:**

- |   |   |
|---|---|
| 1. Minimum ceiling height for wall mounting                 | 7. Power connection (7a: power supply, 7b: motor) |
| 2. Ventilation grid   | 8. Degree of protection option                    |
| 3. Air outlet area  | 9. Degree of protection IP20                      |
| 4. Air inlet area   | IP21                      Option <M21>            |
| 5. Cables can enter from below within hatched area          | IP23                      Option <M23>            |
| 6. Main circuit breaker, can be secured by padlock (option) | IP43                      Option <M43>            |
|   | IP54                      Option <M54>            |
|   | 10. Transport unit                                |

# Dimension Drawings

## Engineering Information

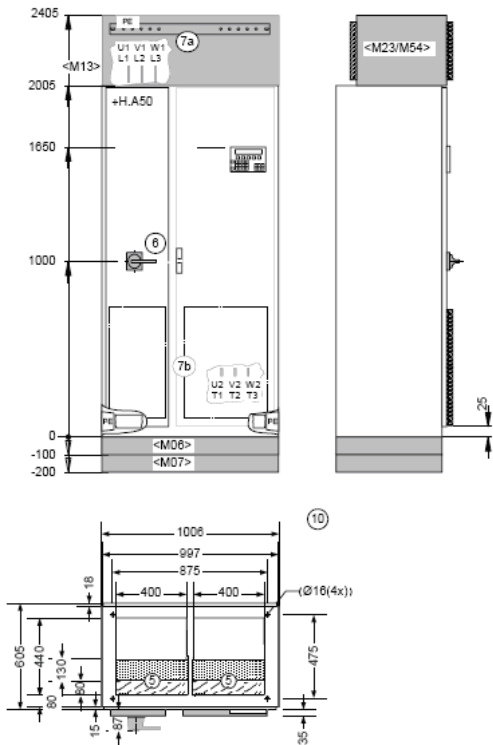
### SINAMICS G150 (type A), continued

**Dimension drawing 7:**

380 V to 480 V

200 - 250 kW

Power supply connection from above, motor connection from below

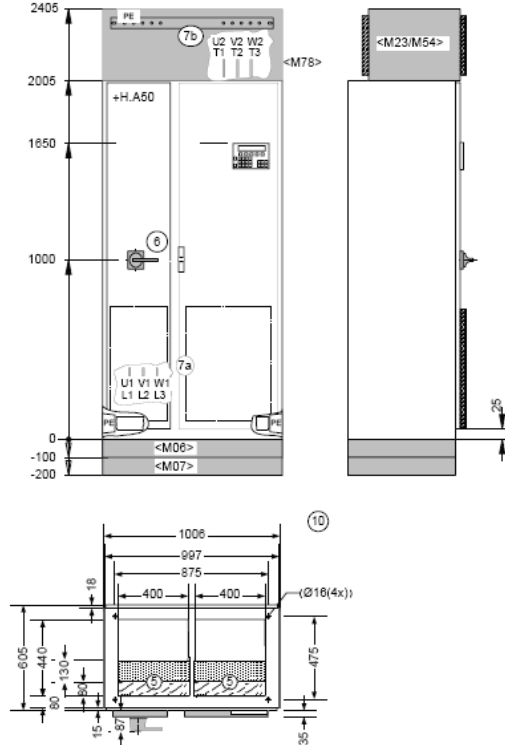


**Dimension drawing 8:**

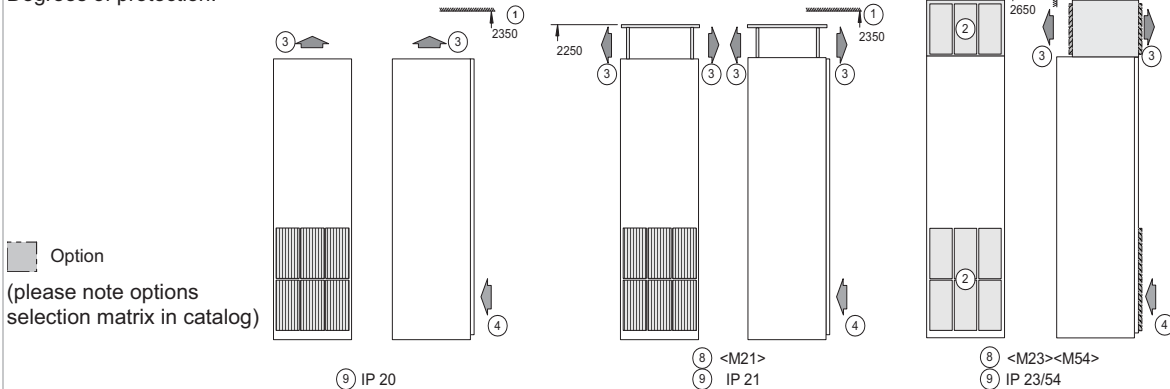
380 V to 480 V

200 - 250 kW

Power supply connection from below, motor connection from above



Degrees of protection:



**Legend:**

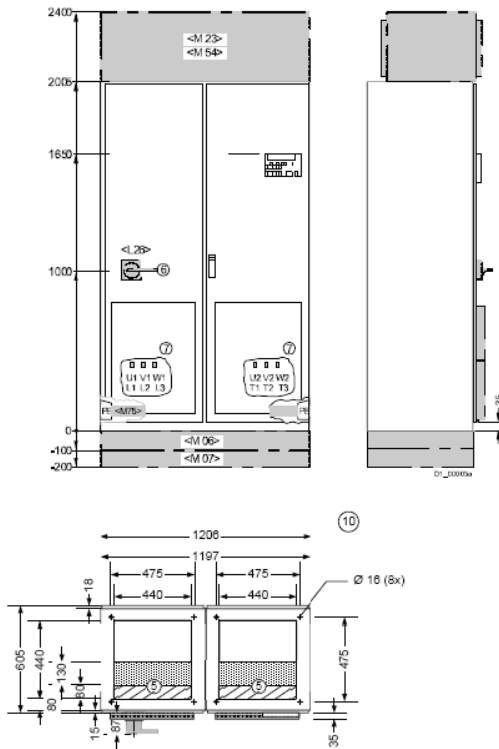
- |   |   |
|---|---|
| 1. Minimum ceiling height for wall mounting                 | 7. Power connection (7a: power supply, 7b: motor) |
| 2. Ventilation grid   | 8. Degree of protection option                    |
| 3. Air outlet area  | 9. Degree of protection IP20                      |
| 4. Air inlet area   | IP21                      Option <M21>            |
| 5. Cables can enter from below within hatched area          | IP23                      Option <M23>            |
| 6. Main circuit breaker, can be secured by padlock (option) | IP43                      Option <M43>            |
|   | IP54                      Option <M54>            |
|   | 10. Transport unit                                |

## SINAMICS G150 (type A), continued

### Dimension drawing 9:

380 V to 480 V                      315 kW  
 500 V to 600 V                    250 - 400 kW  
 660 V to 690 V                    400 - 560 kW

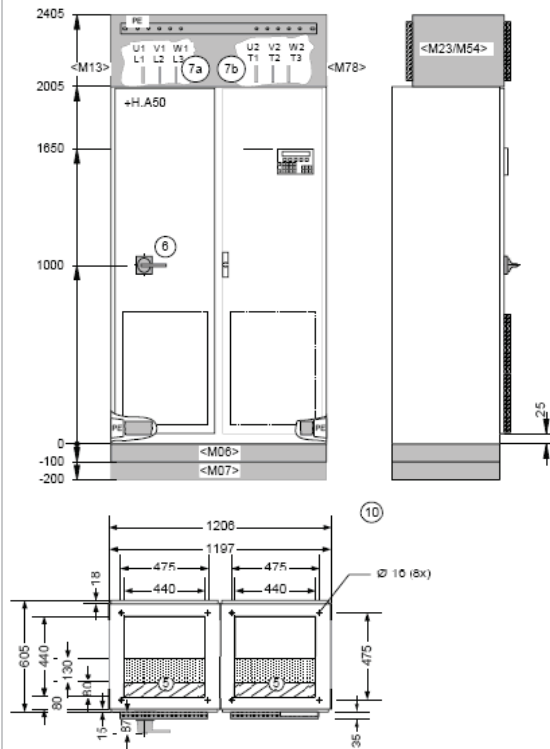
Power supply connection from below, motor connection from below



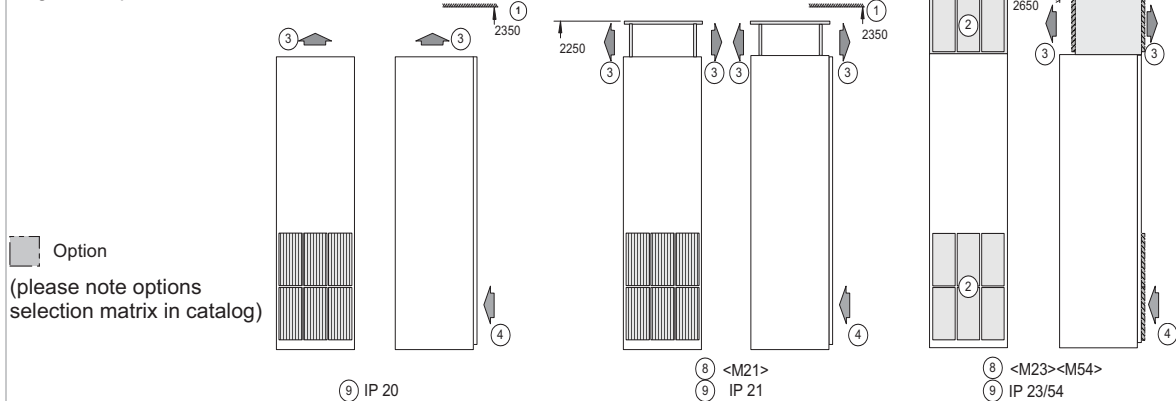
### Dimension drawing 10:

380 V to 480 V                      315 kW  
 500 V to 600 V                    250 - 400 kW  
 660 V to 690 V                    400 - 560 kW

Power supply connection from above, motor connection from above



### Degrees of protection:



### Legend:

- |   |   |
|---|---|
| 1. Minimum ceiling height for wall mounting                 | 7. Power connection (7a: power supply, 7b: motor) |
| 2. Ventilation grid   | 8. Degree of protection option                    |
| 3. Air outlet area  | 9. Degree of protection IP20                      |
| 4. Air inlet area   | IP21                      Option <M21>            |
| 5. Cables can enter from below within hatched area          | IP23                      Option <M23>            |
| 6. Main circuit breaker, can be secured by padlock (option) | IP43                      Option <M43>            |
|   | IP54                      Option <M54>            |
|   | 10. Transport unit                                |

# Dimension Drawings

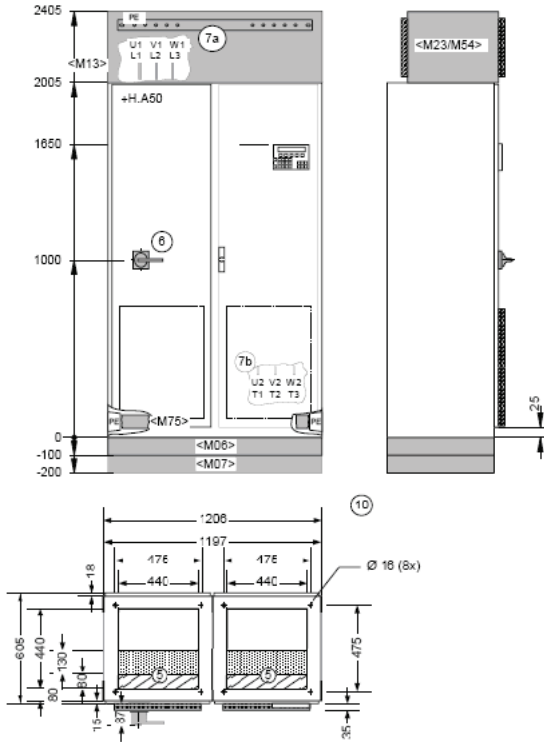
## Engineering Information

### SINAMICS G150 (type A), continued

#### Dimension drawing 11:

380 V to 480 V                      315 kW  
 500 V to 600 V                    250 - 400 kW  
 660 V to 690 V                    400 - 560 kW

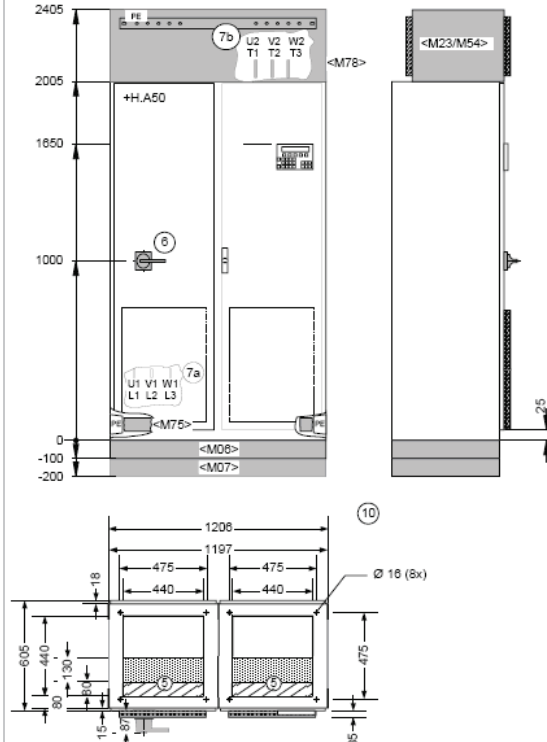
Power supply connection from above, motor connection from below



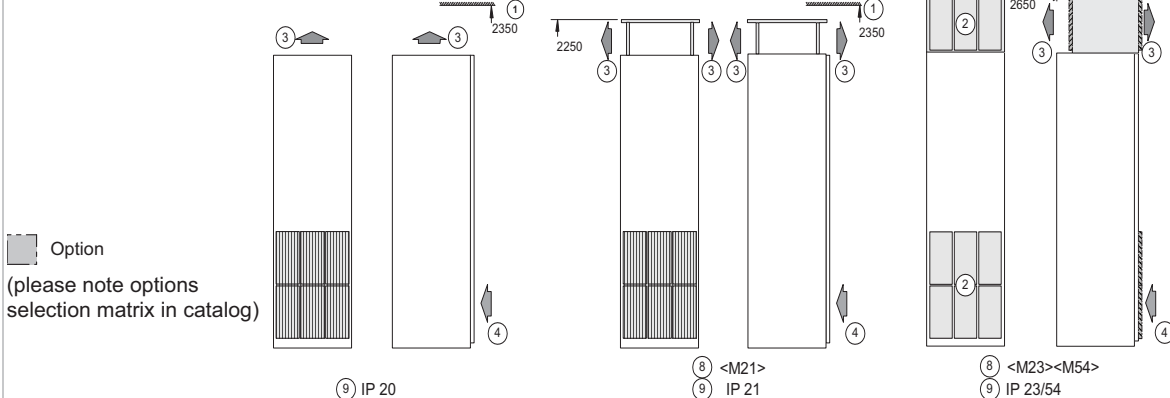
#### Dimension drawing 12:

380 V to 480 V                      315 kW  
 500 V to 600 V                    250 - 400 kW  
 660 V to 690 V                    400 - 560 kW

Power supply connection from below, motor connection from above



#### Degrees of protection:



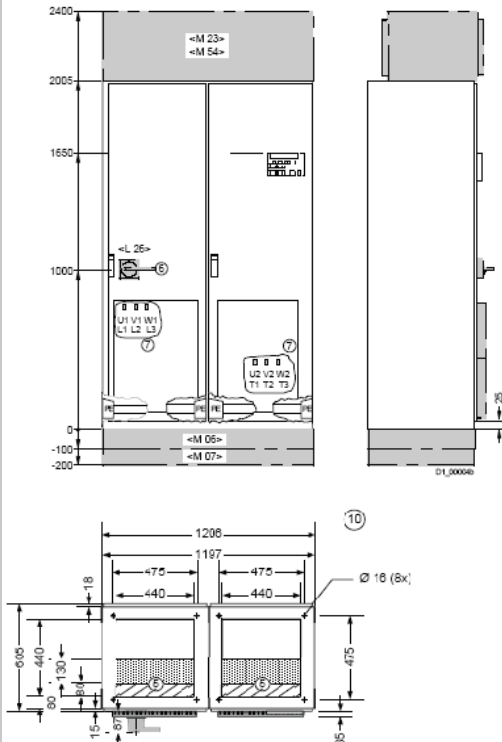
#### Legend:

- |   |   |
|---|---|
| 1. Minimum ceiling height for wall mounting                 | 7. Power connection (7a: power supply, 7b: motor) |
| 2. Ventilation grid   | 8. Degree of protection option                    |
| 3. Air outlet area  | 9. Degree of protection IP20                      |
| 4. Air inlet area   | IP21                      Option <M21>            |
| 5. Cables can enter from below within hatched area          | IP23                      Option <M23>            |
| 6. Main circuit breaker, can be secured by padlock (option) | IP43                      Option <M43>            |
|   | IP54                      Option <M54>            |
|   | 10. Transport unit                                |

**SINAMICS G150 (type A), continued**

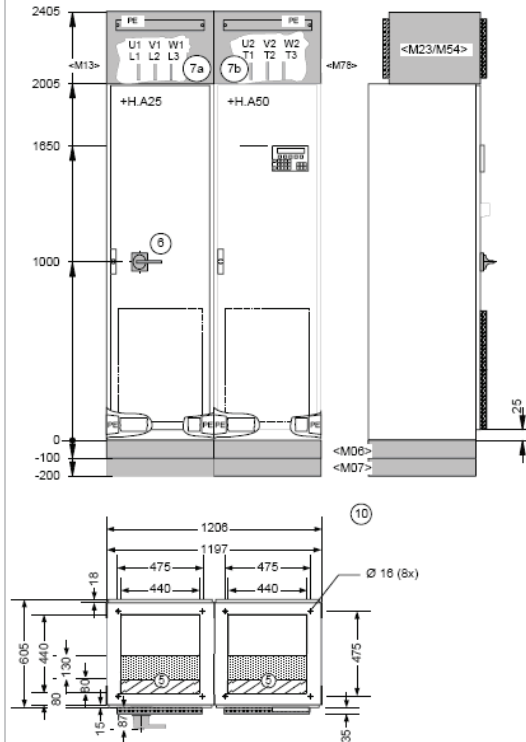
**Dimension drawing 13:**  
380 V to 480 V      400 - 450 kW

Power supply connection from below, motor connection from below

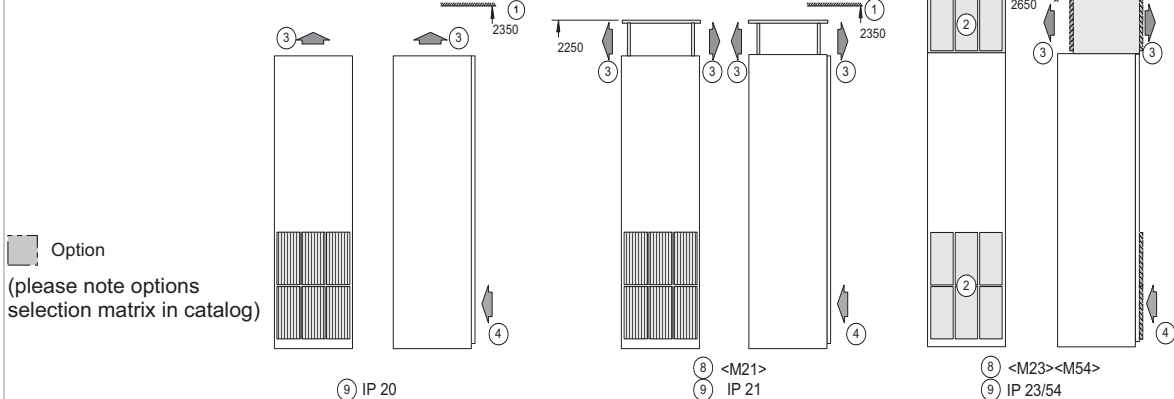


**Dimension drawing 14:**  
380 V to 480 V      400 - 450 kW

Power supply connection from above, motor connection from above



Degrees of protection:



**Legend:**

- |  |   |
|--|---|
| <ul style="list-style-type: none"> <li>1. Minimum ceiling height for wall mounting</li> <li>2. Ventilation grid</li> <li>3. Air outlet area</li> <li>4. Air inlet area</li> <li>5. Cables can enter from below within hatched area</li> <li>6. Main circuit breaker, can be secured by padlock (option)</li> </ul> | <ul style="list-style-type: none"> <li>7. Power connection (7a: power supply, 7b: motor)</li> <li>8. Degree of protection option</li> <li>9. Degree of protection IP20<br/>IP21      Option &lt;M21&gt;<br/>IP23      Option &lt;M23&gt;<br/>IP43      Option &lt;M43&gt;<br/>IP54      Option &lt;M54&gt;</li> <li>10. Transport unit</li> </ul> |
|--|---|

# Dimension Drawings

## Engineering Information

### SINAMICS G150 (type A), continued

**Dimension drawing 15:**  
380 V to 480 V      400 - 450 kW

Power supply connection from above, motor connection from below

**Dimension drawing 16:**  
380 V to 480 V      400 - 450 kW

Power supply connection from below, motor connection from above

**Degrees of protection:**

Option  
(please note options selection matrix in catalog)

⑧ IP 20      ⑧ <M21>  
⑨ IP 21      ⑨ IP 21      ⑧ <M23><M54>  
⑨ IP 23/54

**Legend:**

1. Minimum ceiling height for wall mounting	7. Power connection (7a: power supply, 7b: motor)
2. Ventilation grid	8. Degree of protection option
3. Air outlet area	9. Degree of protection IP20
4. Air inlet area	IP21      Option <M21>
5. Cables can enter from below within hatched area	IP23      Option <M23>
6. Main circuit breaker, can be secured by padlock (option)	IP54      Option <M43>
	IP54      Option <M54>
	10. Transport unit

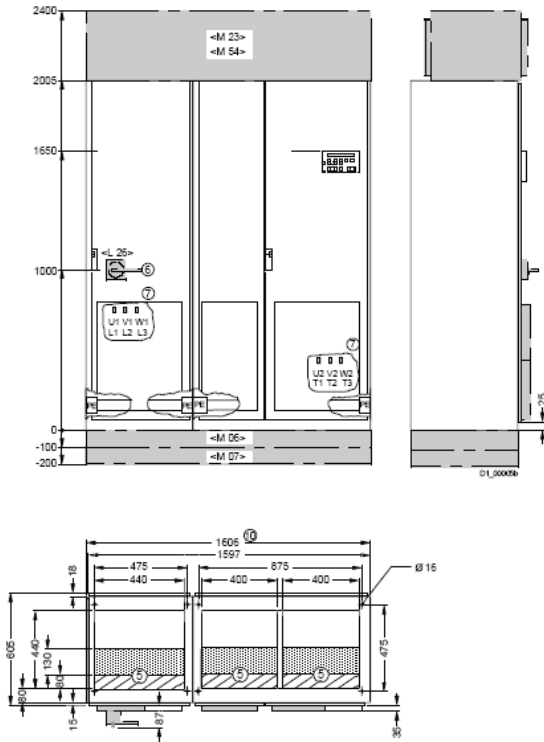


## SINAMICS G150 (type A), continued

### Dimension drawing 17:

380 V to 480 V                      560 kW  
 500 V to 600 V                    500 - 560 kW  
 660 V to 690 V                    710 - 800 kW

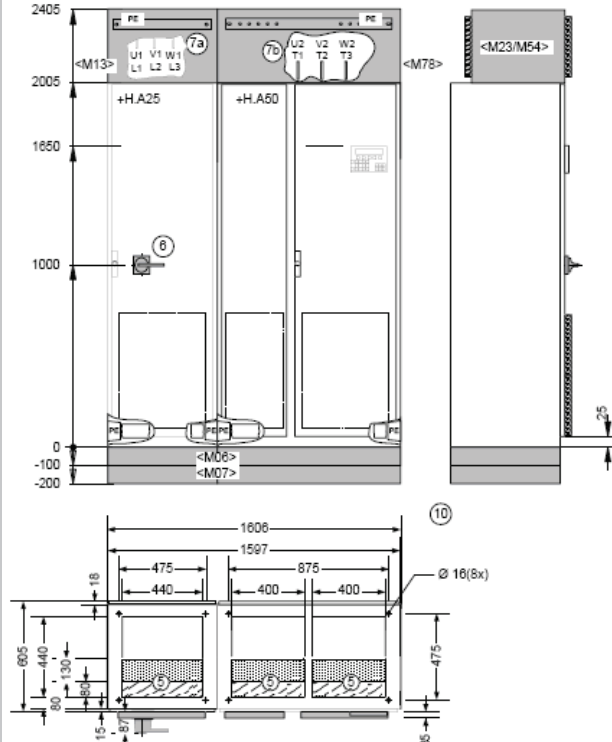
Power supply connection from below, motor connection from below



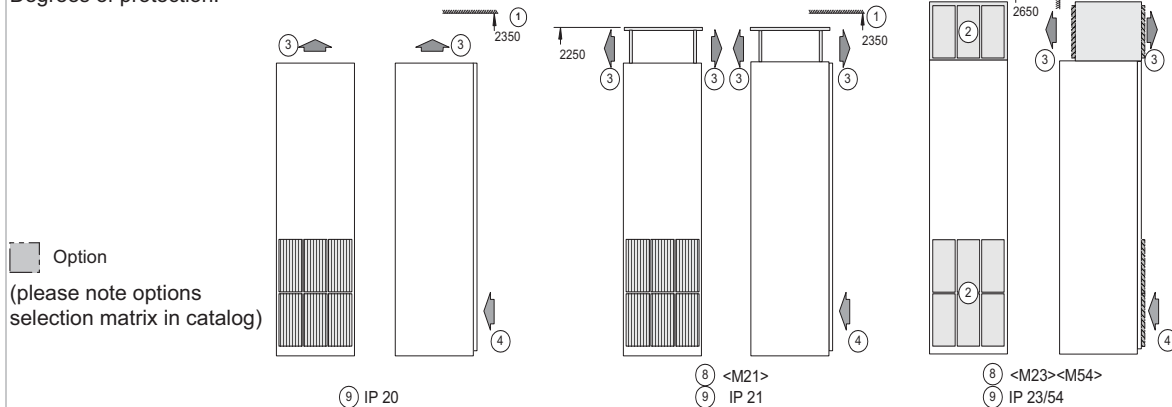
### Dimension drawing 18:

380 V to 480 V                      560 kW  
 500 V to 600 V                    500 - 560 kW  
 660 V to 690 V                    710 - 800 kW

Power supply connection from above, motor connection from above



### Degrees of protection:



### Legend:

- |   |   |
|---|---|
| 1. Minimum ceiling height for wall mounting                 | 7. Power connection (7a: power supply, 7b: motor) |
| 2. Ventilation grid   | 8. Degree of protection option                    |
| 3. Air outlet area  | 9. Degree of protection IP20                      |
| 4. Air inlet area   | IP21                      Option <M21>            |
| 5. Cables can enter from below within hatched area          | IP23                      Option <M23>            |
| 6. Main circuit breaker, can be secured by padlock (option) | IP43                      Option <M43>            |
|   | IP54                      Option <M54>            |
|   | 10. Transport unit                                |

# Dimension Drawings

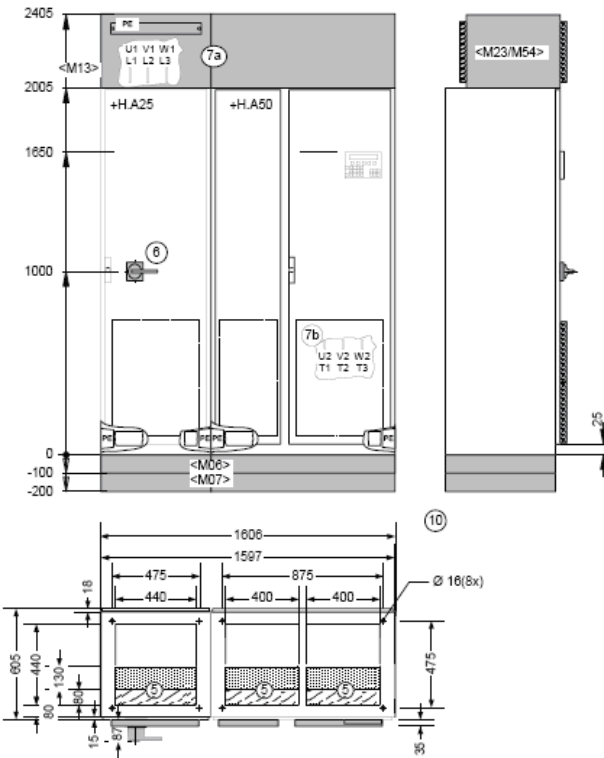
## Engineering Information

### SINAMICS G150 (type A), continued

**Dimension drawing 19:**

380 V to 480 V                      560 kW  
 500 V to 600 V                    500 - 560 kW  
 660 V to 690 V                    710 - 800 kW

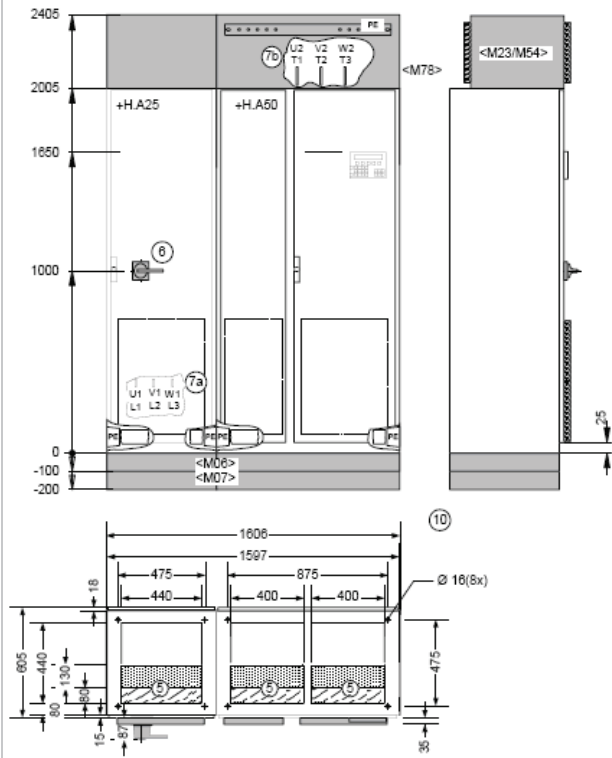
Power supply connection from above, motor connection from below



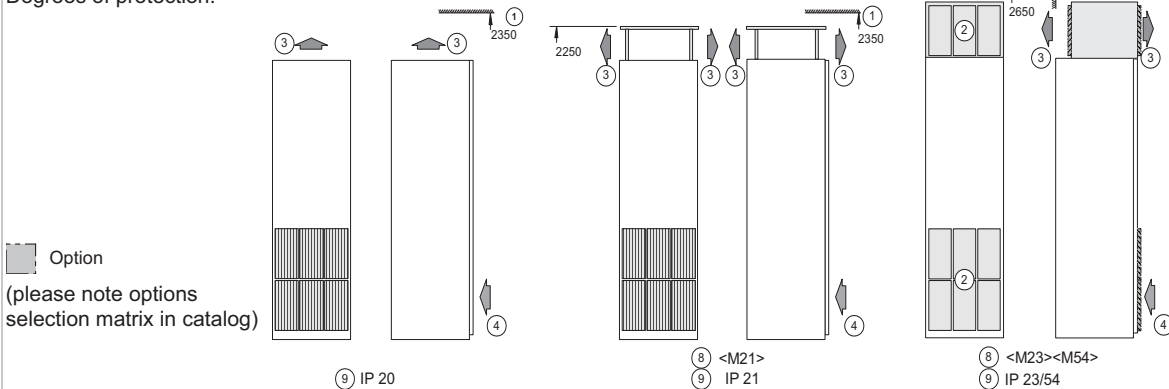
**Dimension drawing 20:**

380 V to 480 V                      560 kW  
 500 V to 600 V                    500 - 560 kW  
 660 V to 690 V                    710 - 800 kW

Power supply connection from below, motor connection from above



Degrees of protection:



**Legend:**

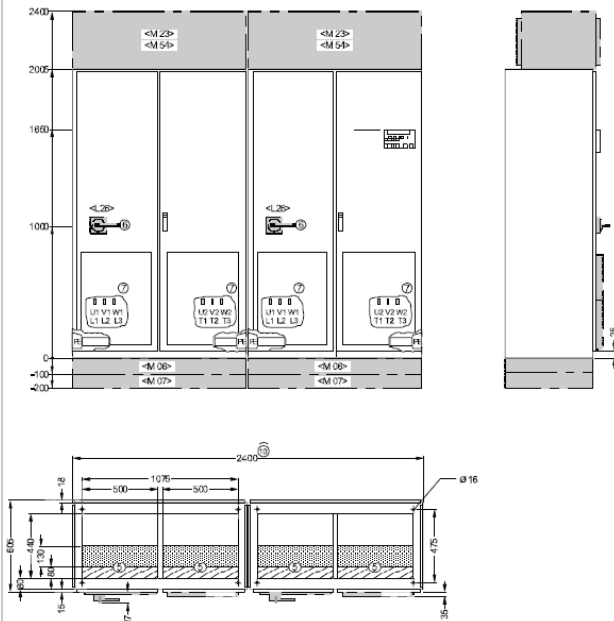
- |   |   |
|---|---|
| 1. Minimum ceiling height for wall mounting                 | 7. Power connection (7a: power supply, 7b: motor) |
| 2. Ventilation grid   | 8. Degree of protection option                    |
| 3. Air outlet area  | 9. Degree of protection IP20                      |
| 4. Air inlet area   | IP21                      Option <M21>            |
| 5. Cables can enter from below within hatched area          | IP23                      Option <M23>            |
| 6. Main circuit breaker, can be secured by padlock (option) | IP43                      Option <M43>            |
|   | IP54                      Option <M54>            |
|   | 10. Transport unit                                |

## SINAMICS G150 (type A), continued

### Dimension drawing 21:

380 V to 480 V                      630 kW  
 500 V to 600 V                    630 - 710 kW  
 660 V to 690 V                    1000 kW

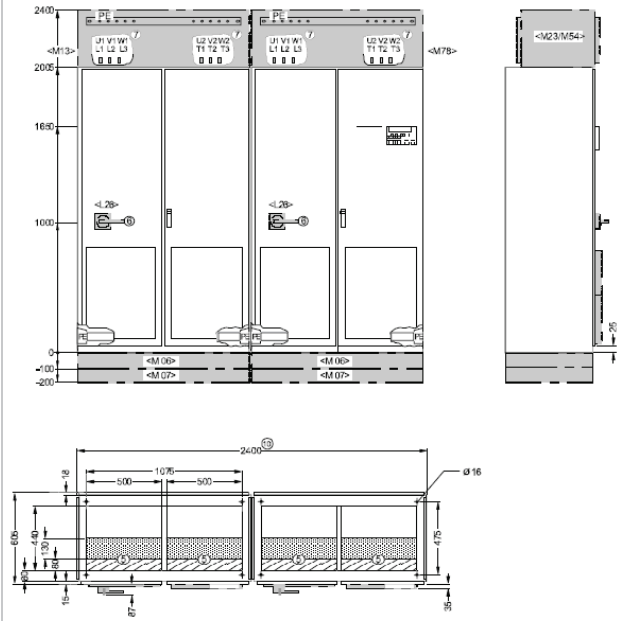
Power supply connection from below, motor connection from below



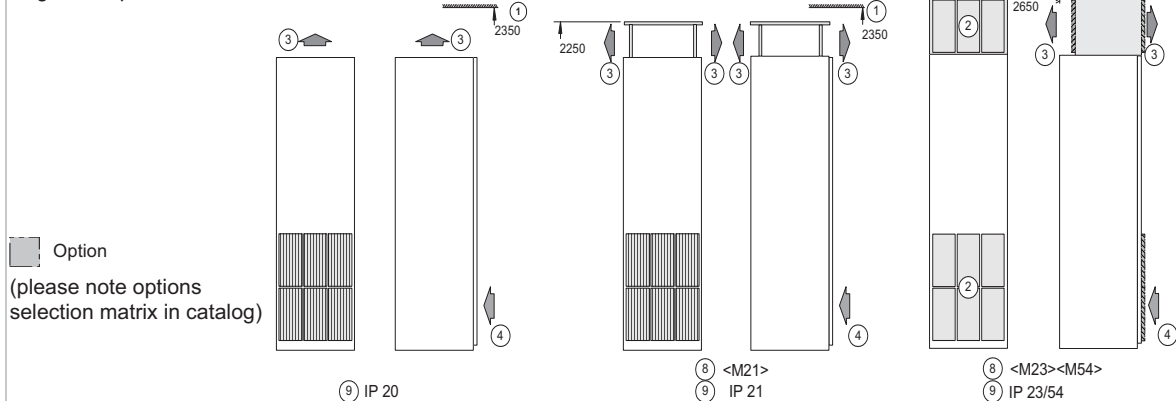
### Dimension drawing 22:

380 V to 480 V                      630 kW  
 500 V to 600 V                    630 - 710 kW  
 660 V to 690 V                    1000 kW

Power supply connection from above, motor connection from above



### Degrees of protection:



### Legend:

- |   |   |
|---|---|
| 1. Minimum ceiling height for wall mounting                 | 7. Power connection (7a: power supply, 7b: motor) |
| 2. Ventilation grid   | 8. Degree of protection option                    |
| 3. Air outlet area  | 9. Degree of protection IP20                      |
| 4. Air inlet area   | IP21                      Option <M21>            |
| 5. Cables can enter from below within hatched area          | IP23                      Option <M23>            |
| 6. Main circuit breaker, can be secured by padlock (option) | IP43                      Option <M43>            |
|   | IP54                      Option <M54>            |
|   | 10. 2 transport units, each 1200 mm               |

# Dimension Drawings

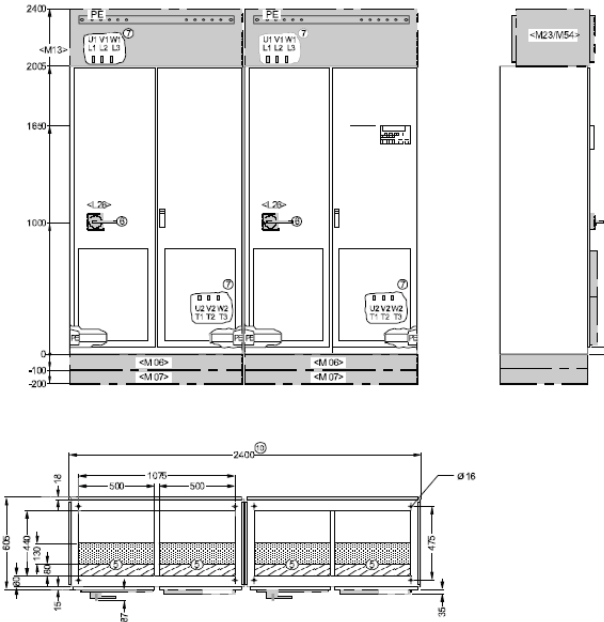
## Engineering Information

### SINAMICS G150 (type A), continued

#### Dimension drawing 23:

380 V to 480 V                      630 kW  
 500 V to 600 V                    630 - 710 kW  
 660 V to 690 V                    1000 kW

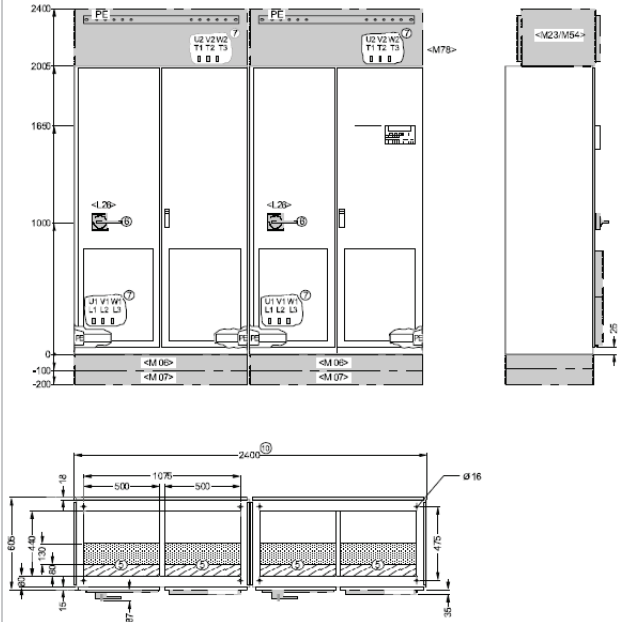
Power supply connection from above, motor connection from below



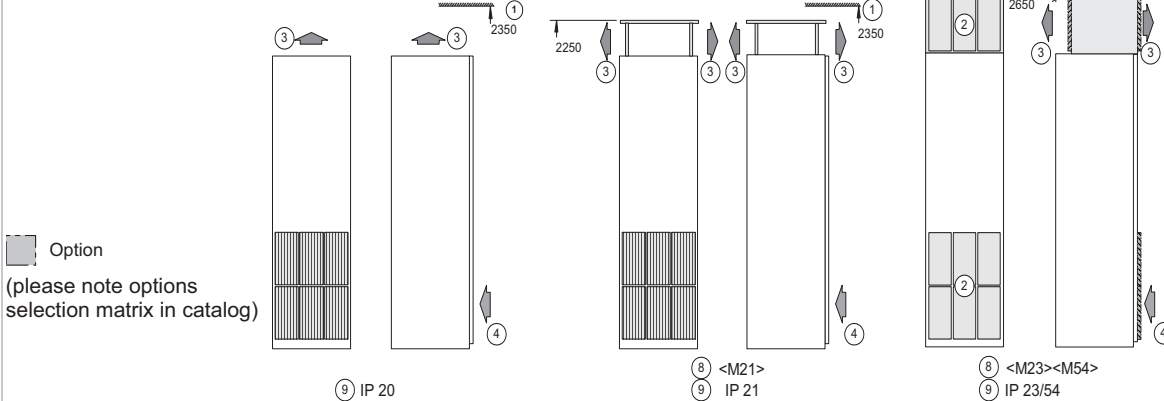
#### Dimension drawing 24:

380 V to 480 V                      630 kW  
 500 V to 600 V                    630 - 710 kW  
 660 V to 690 V                    1000 kW

Power supply connection from below, motor connection from above



#### Degrees of protection:



#### Legend:

- |   |   |
|---|---|
| 1. Minimum ceiling height for wall mounting                 | 7. Power connection (7a: power supply, 7b: motor) |
| 2. Ventilation grid   | 8. Degree of protection option                    |
| 3. Air outlet area  | 9. Degree of protection IP20                      |
| 4. Air inlet area   | IP21                      Option <M21>            |
| 5. Cables can enter from below within hatched area          | IP23                      Option <M23>            |
| 6. Main circuit breaker, can be secured by padlock (option) | IP43                      Option <M43>            |
|   | IP54                      Option <M54>            |
|   | 10. 2 transport units, each 1200 mm               |

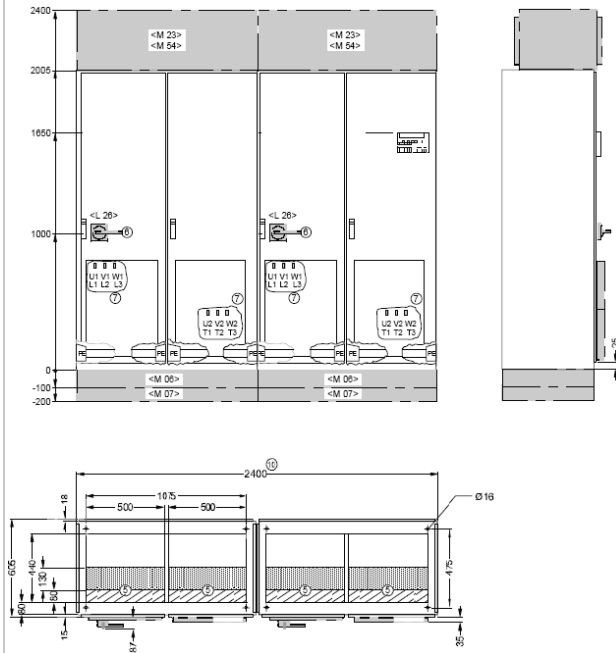
## SINAMICS G150 (type A), continued

**Dimension drawing 25:**

380 V to 480 V

710 - 900 kW

Power supply connection from below, motor connection from below

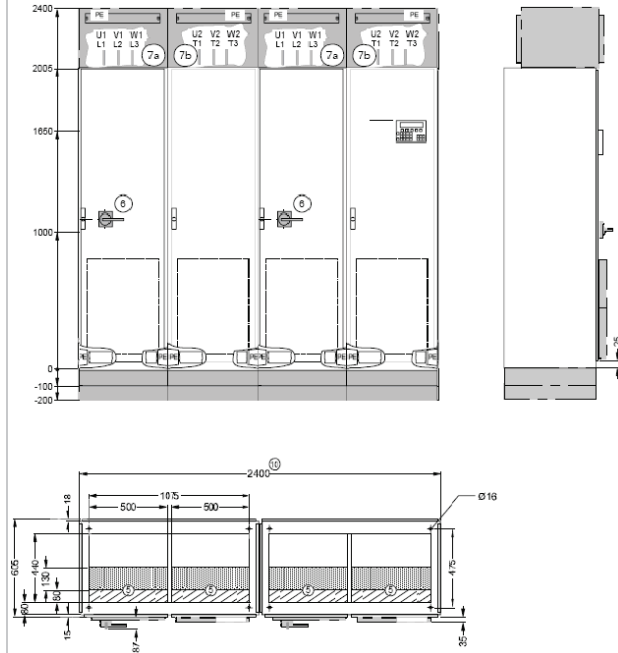


**Dimension drawing 26:**

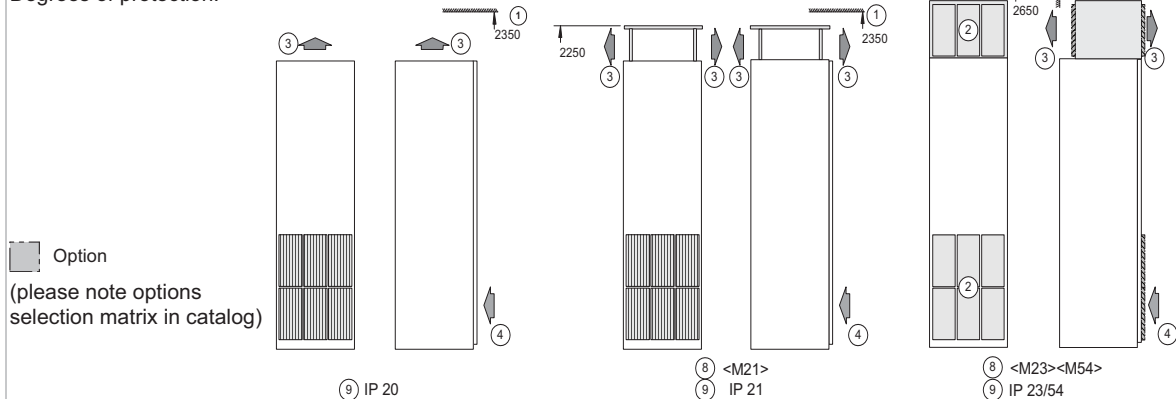
380 V to 480 V

710 - 900 kW

Power supply connection from above, motor connection from above



Degrees of protection:



**Legend:**

- |   |   |
|---|---|
| 1. Minimum ceiling height for wall mounting                 | 7. Power connection (7a: power supply, 7b: motor) |
| 2. Ventilation grid   | 8. Degree of protection option                    |
| 3. Air outlet area  | 9. Degree of protection IP20                      |
| 4. Air inlet area   | IP21                      Option <M21>            |
| 5. Cables can enter from below within hatched area          | IP23                      Option <M23>            |
| 6. Main circuit breaker, can be secured by padlock (option) | IP43                      Option <M43>            |
|   | IP54                      Option <M54>            |
|   | 10. 2 transport units, each 1200 mm               |

# Dimension Drawings

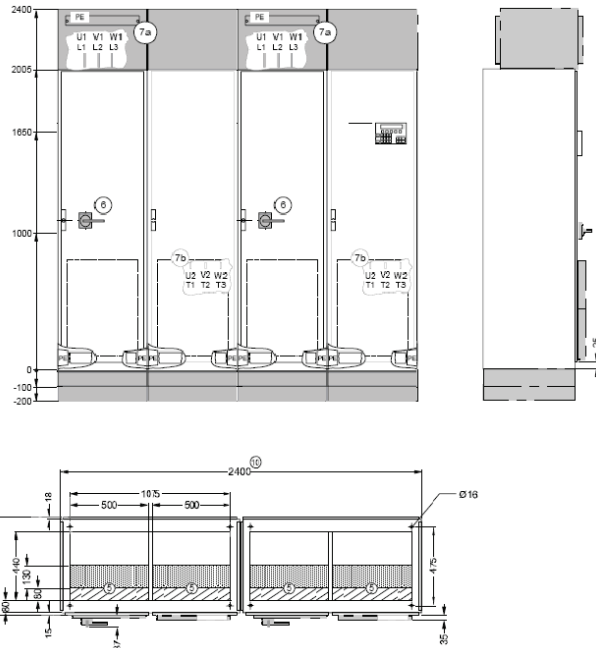
## Engineering Information

### SINAMICS G150 (type A), continued

**Dimension drawing 27:**

380 V to 480 V      710 - 900 kW

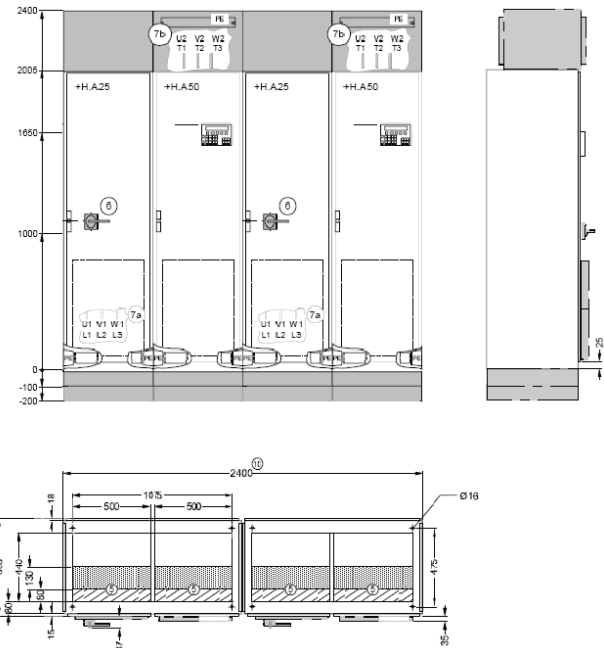
Power supply connection from above, motor connection from below



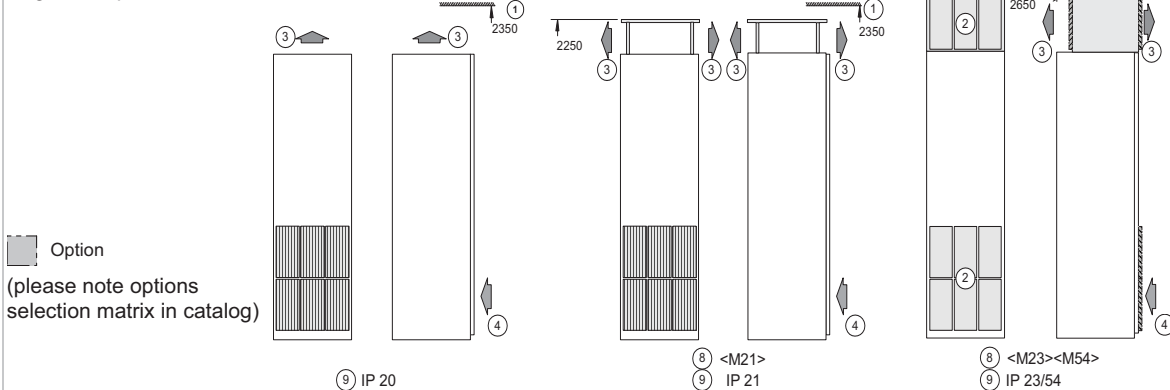
**Dimension drawing 28:**

380 V to 480 V      710 - 900 kW

Power supply connection from below, motor connection from above



Degrees of protection:



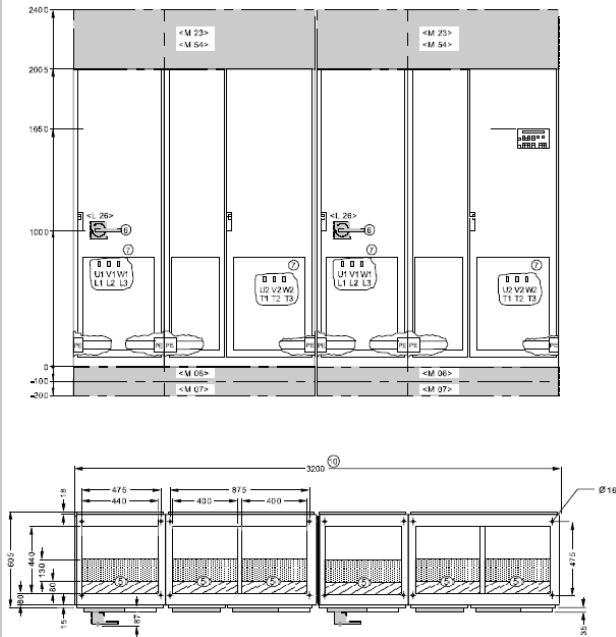
**Legend:**

- |   |   |
|---|---|
| 1. Minimum ceiling height for wall mounting                 | 7. Power connection (7a: power supply, 7b: motor) |
| 2. Ventilation grid   | 8. Degree of protection option                    |
| 3. Air outlet area  | 9. Degree of protection IP20                      |
| 4. Air inlet area   | IP21      Option <M21>                            |
| 5. Cables can enter from below within hatched area          | IP23      Option <M23>                            |
| 6. Main circuit breaker, can be secured by padlock (option) | IP43      Option <M43>                            |
|   | IP54      Option <M54>                            |
|   | 10. 2 transport units, each 1200 mm               |

## SINAMICS G150 (type A), continued

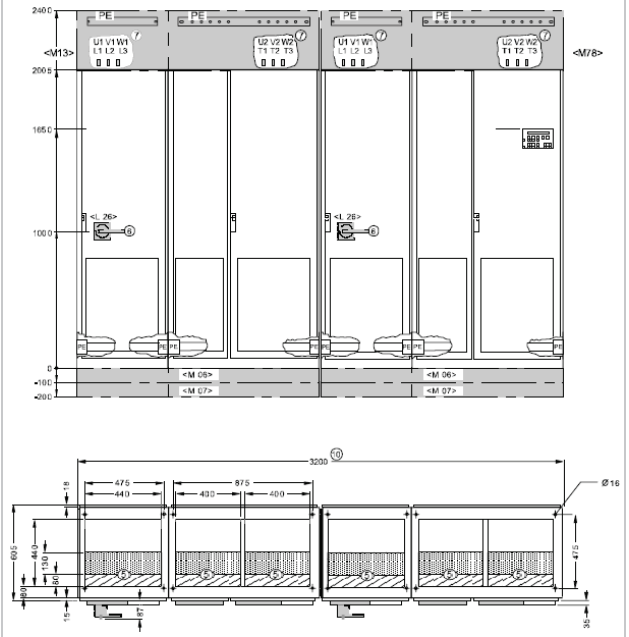
**Dimension drawing 29:**

500 V to 600 V                      1000 kW  
 660 V to 690 V                    1350 - 1500 kW  
 Power supply connection from below, motor connection from below

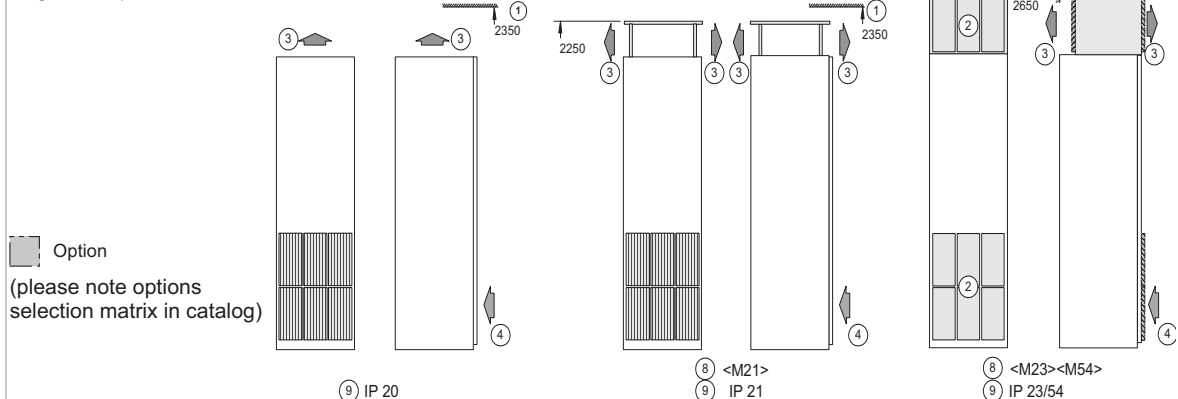


**Dimension drawing 30:**

500 V to 600 V                      1000 kW  
 660 V to 690 V                    1350 - 1500 kW  
 Power supply connection from above, motor connection from above



**Degrees of protection:**



**Legend:**

- |   |   |
|---|---|
| 1. Minimum ceiling height for wall mounting                 | 7. Power connection (7a: power supply, 7b: motor) |
| 2. Ventilation grid   | 8. Degree of protection option                    |
| 3. Air outlet area  | 9. Degree of protection IP20                      |
| 4. Air inlet area   | IP21                      Option <M21>            |
| 5. Cables can enter from below within hatched area          | IP23                      Option <M23>            |
| 6. Main circuit breaker, can be secured by padlock (option) | IP43                      Option <M43>            |
|   | IP54                      Option <M54>            |
|   | 10. 2 transport units, each 1600 mm               |

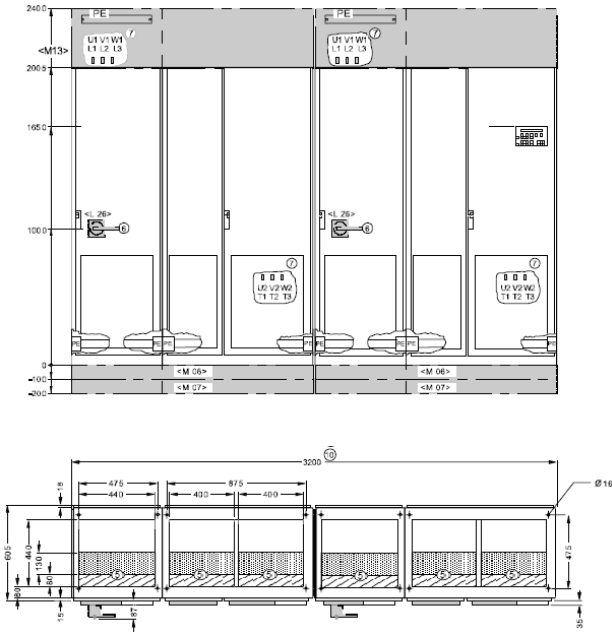
# Dimension Drawings

## Engineering Information

### SINAMICS G150 (type A), continued

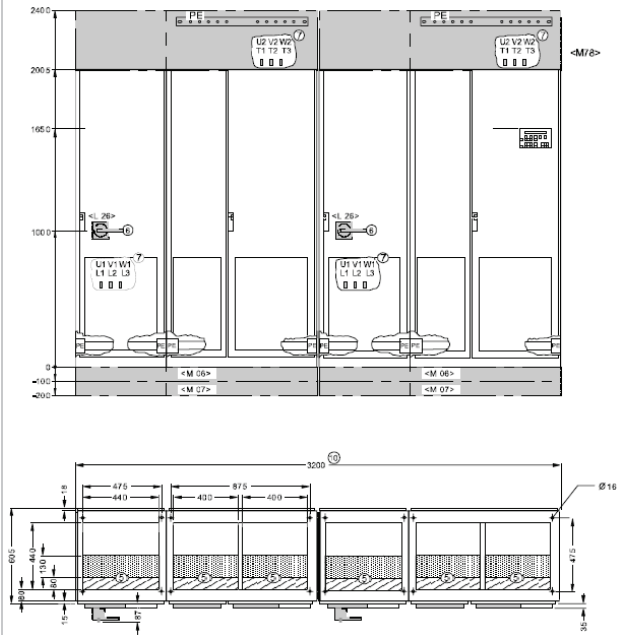
**Dimension drawing 31:**

500 V to 600 V                      1000 kW  
 660 V to 690 V                    1350 - 1500 kW  
 Power supply connection from above, motor connection from below

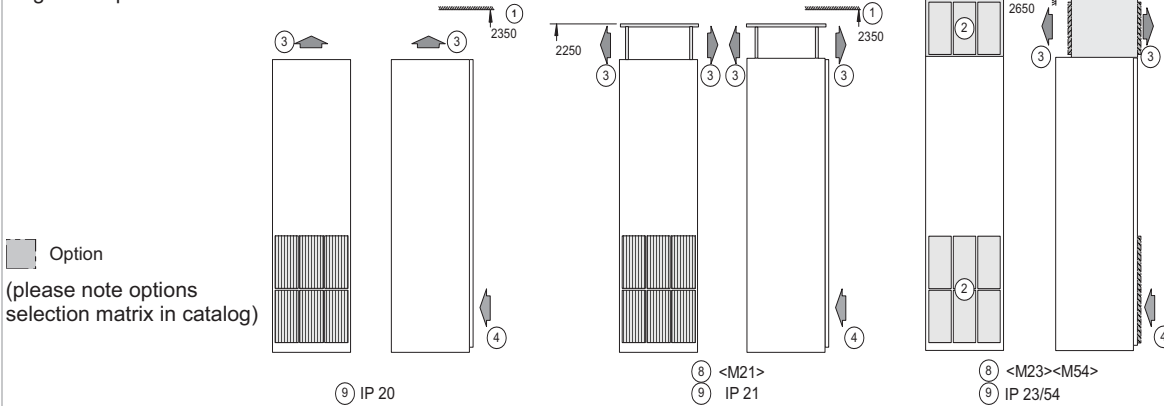


**Dimension drawing 32:**

500 V to 600 V                      1000 kW  
 660 V to 690 V                    1350 - 1500 kW  
 Power supply connection from below, motor connection from above



**Degrees of protection:**



**Legend:**

- |   |   |
|---|---|
| 1. Minimum ceiling height for wall mounting                 | 7. Power connection (7a: power supply, 7b: motor) |
| 2. Ventilation grid   | 8. Degree of protection option                    |
| 3. Air outlet area  | 9. Degree of protection IP20                      |
| 4. Air inlet area   | IP21                      Option <M21>            |
| 5. Cables can enter from below within hatched area          | IP23                      Option <M23>            |
| 6. Main circuit breaker, can be secured by padlock (option) | IP43                      Option <M43>            |
|   | IP54                      Option <M54>            |
|   | 10. 2 transport units, each 1600 mm               |