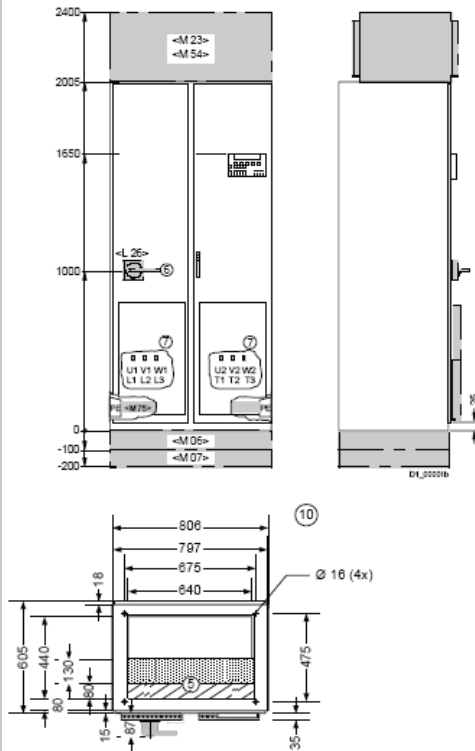


SINAMICS G150 (type A)

Dimension drawing 1:

380 V to 480 V 110 - 160 kW
 500 V to 600 V 110 - 200 kW
 660 V to 690 V 75 - 315 kW

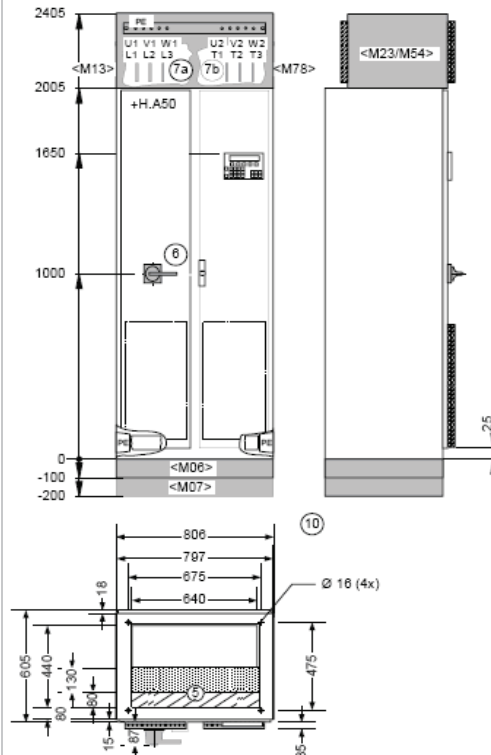
Power supply connection from below, motor connection from below



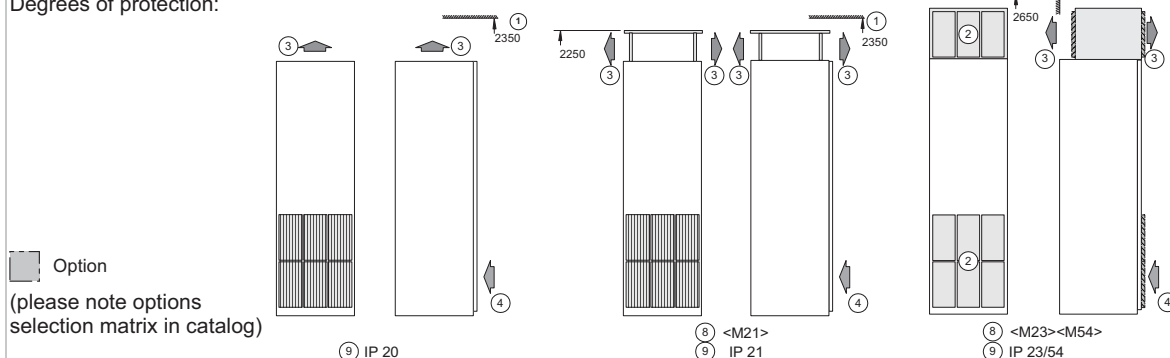
Dimension drawing 2:

380 V to 480 V 110 - 160 kW
 500 V to 600 V 110 - 200 kW
 660 V to 690 V 75 - 315 kW

Power supply connection from above, motor connection from above



Degrees of protection:



Legend:

- | | |
|---|---|
| 1. Minimum ceiling height for wall mounting | 7. Power connection (7a: power supply, 7b: motor) |
| 2. Ventilation grid | 8. Degree of protection option |
| 3. Air outlet area | 9. Degree of protection IP20 |
| 4. Air inlet area | IP21 Option <M21> |
| 5. Cables can enter from below within hatched area | IP23 Option <M23> |
| 6. Main circuit breaker, can be secured by padlock (option) | IP43 Option <M43> |
| | IP54 Option <M54> |
| | 10. Transport unit |

Dimension Drawings

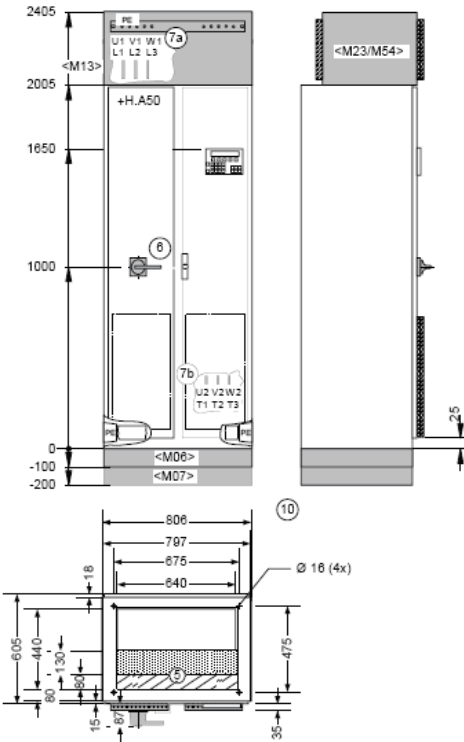
Engineering Information

SINAMICS G150 (type A), continued

Dimension drawing 3:

380 V to 480 V 110 - 160 kW
 500 V to 600 V 110 - 200 kW
 660 V to 690 V 75 - 315 kW

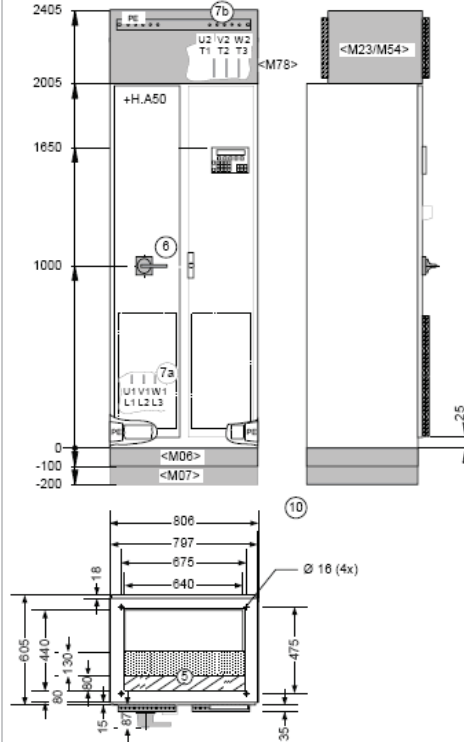
Power supply connection from above, motor connection from below



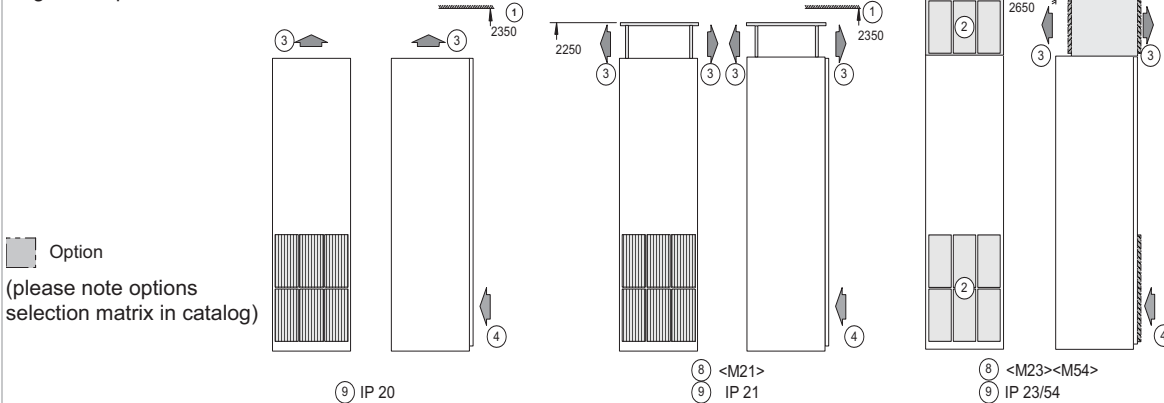
Dimension drawing 4:

380 V to 480 V 110 - 160 kW
 500 V to 600 V 110 - 200 kW
 660 V to 690 V 75 - 315 kW

Power supply connection from below, motor connection from above



Degrees of protection:



Legend:

1. Minimum ceiling height for wall mounting
2. Ventilation grid
3. Air outlet area
4. Air inlet area
5. Cables can enter from below within hatched area
6. Main circuit breaker, can be secured by padlock (option)

7. Power connection (7a: power supply, 7b: motor)
8. Degree of protection option
9. Degree of protection

IP20	Option <M21>
IP21	Option <M23>
IP43	Option <M43>
IP54	Option <M54>
10. Transport unit

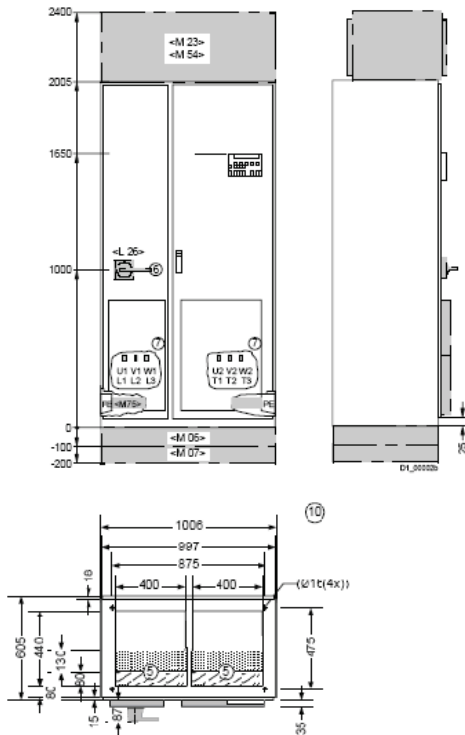
SINAMICS G150 (type A), continued

Dimension drawing 5:

380 V to 480 V

200 - 250 kW

Power supply connection from below, motor connection from below

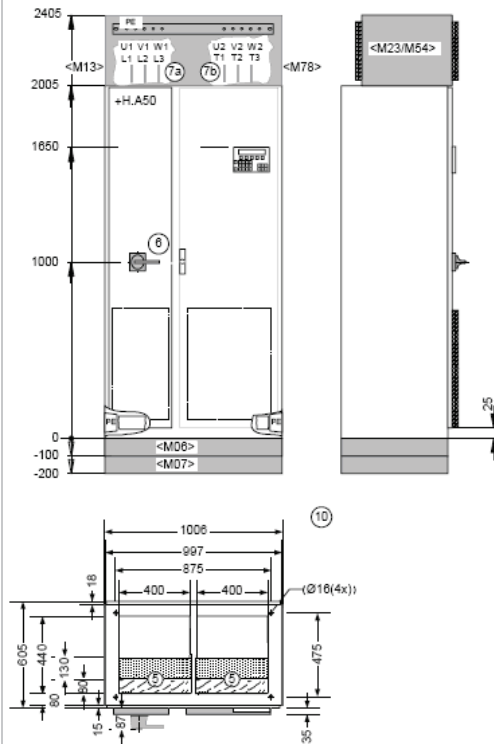


Dimension drawing 6:

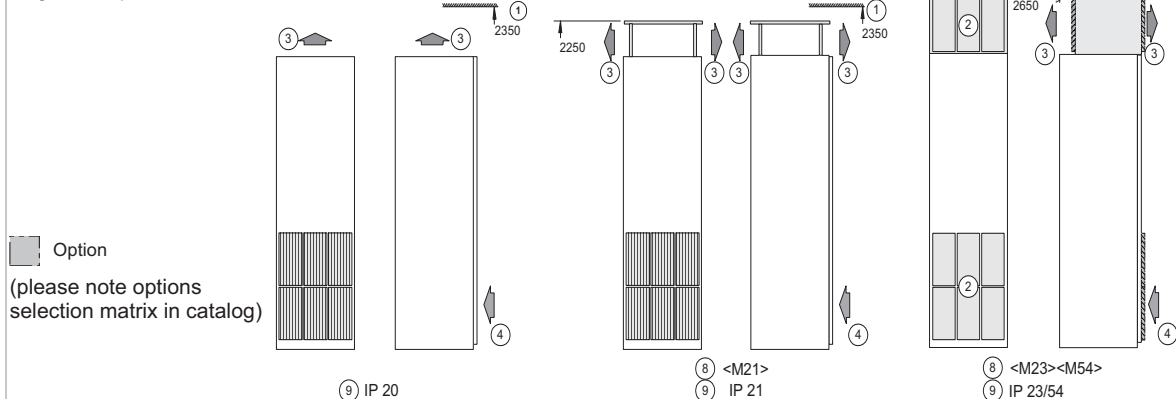
380 V to 480 V

200 - 250 kW

Power supply connection from above, motor connection from above



Degrees of protection:



Legend:

1. Minimum ceiling height for wall mounting
2. Ventilation grid
3. Air outlet area
4. Air inlet area
5. Cables can enter from below within hatched area
6. Main circuit breaker, can be secured by padlock (option)

7. Power connection (7a: power supply, 7b: motor)
8. Degree of protection option
9. Degree of protection IP 20
IP 21 Option <M21>
IP 23 Option <M23>
IP 43 Option <M43>
IP 54 Option <M54>
10. Transport unit

Dimension Drawings

Engineering Information

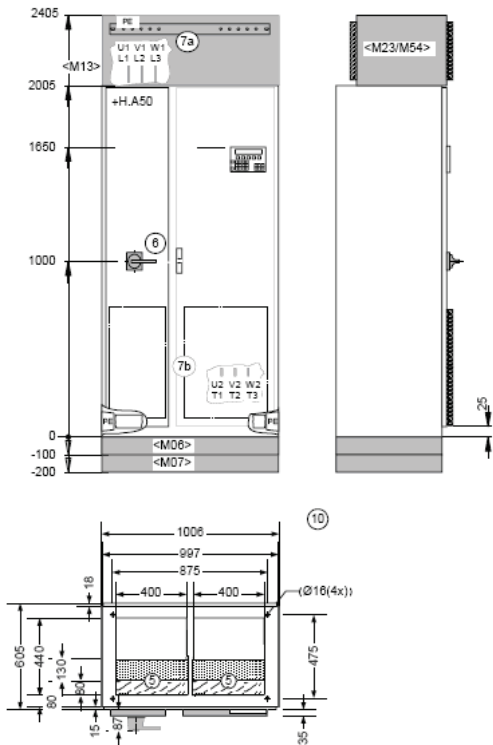
SINAMICS G150 (type A), continued

Dimension drawing 7:

380 V to 480 V

200 - 250 kW

Power supply connection from above, motor connection from below

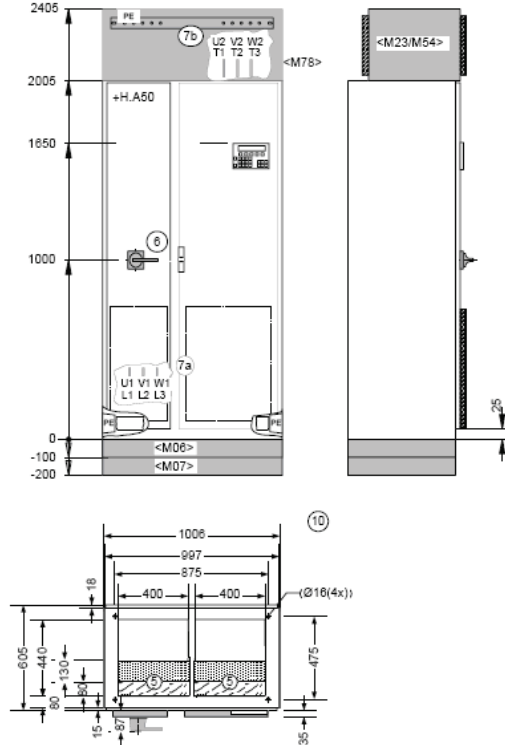


Dimension drawing 8:

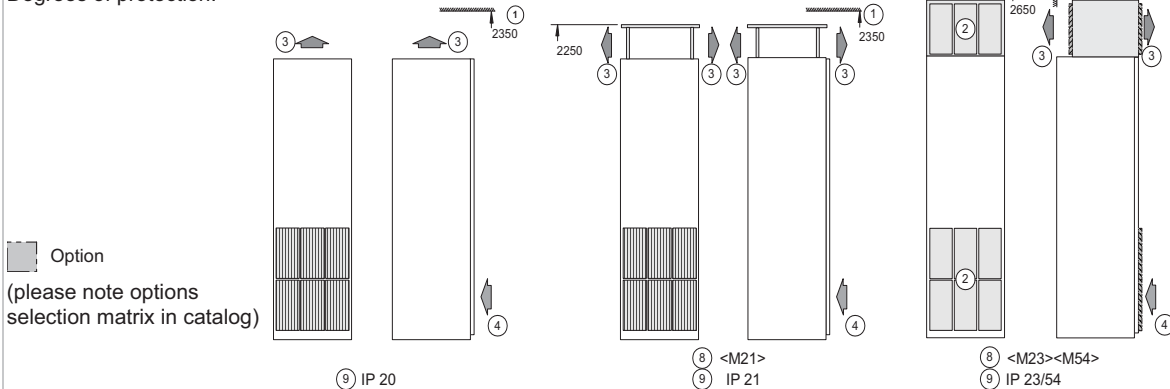
380 V to 480 V

200 - 250 kW

Power supply connection from below, motor connection from above



Degrees of protection:



Legend:

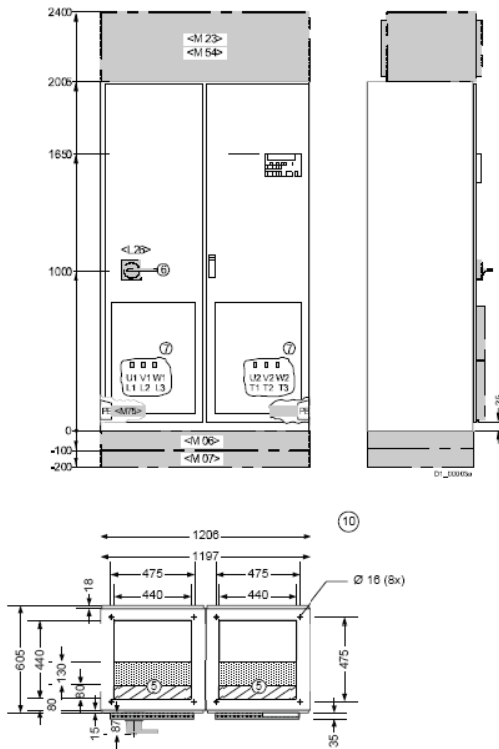
- | | |
|---|---|
| 1. Minimum ceiling height for wall mounting | 7. Power connection (7a: power supply, 7b: motor) |
| 2. Ventilation grid | 8. Degree of protection option |
| 3. Air outlet area | 9. Degree of protection IP20 |
| 4. Air inlet area | IP21 Option <M21> |
| 5. Cables can enter from below within hatched area | IP23 Option <M23> |
| 6. Main circuit breaker, can be secured by padlock (option) | IP43 Option <M43> |
| | IP54 Option <M54> |
| | 10. Transport unit |

SINAMICS G150 (type A), continued

Dimension drawing 9:

380 V to 480 V 315 kW
 500 V to 600 V 250 - 400 kW
 660 V to 690 V 400 - 560 kW

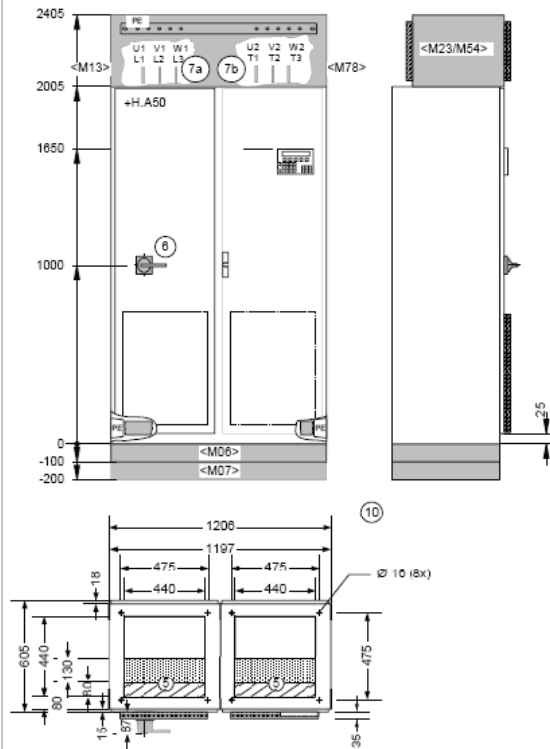
Power supply connection from below, motor connection from below



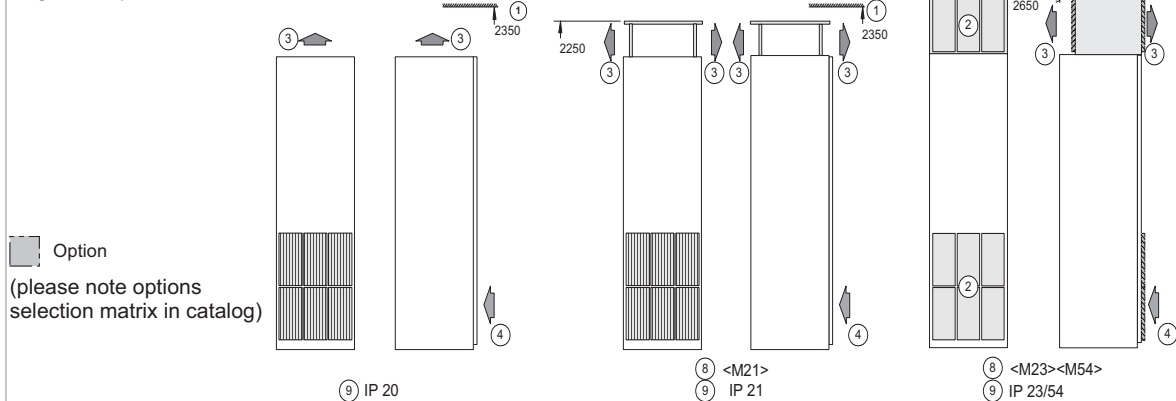
Dimension drawing 10:

380 V to 480 V 315 kW
 500 V to 600 V 250 - 400 kW
 660 V to 690 V 400 - 560 kW

Power supply connection from above, motor connection from above



Degrees of protection:



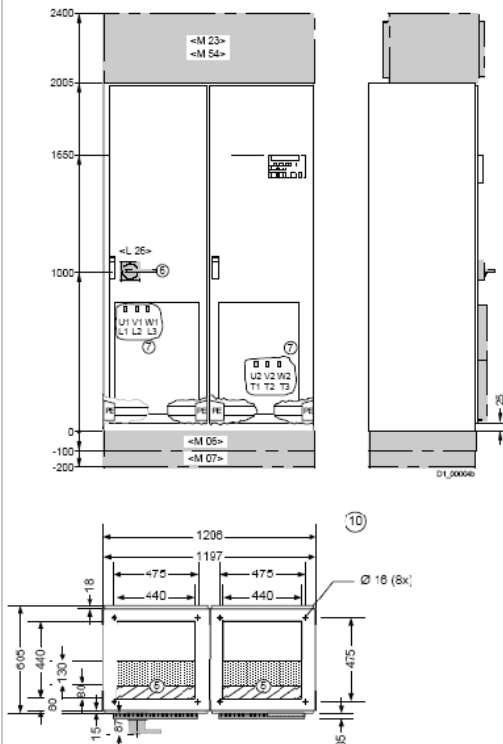
Legend:

- | | |
|---|---|
| 1. Minimum ceiling height for wall mounting | 7. Power connection (7a: power supply, 7b: motor) |
| 2. Ventilation grid | 8. Degree of protection option |
| 3. Air outlet area | 9. Degree of protection IP20 |
| 4. Air inlet area | IP21 Option <M21> |
| 5. Cables can enter from below within hatched area | IP23 Option <M23> |
| 6. Main circuit breaker, can be secured by padlock (option) | IP43 Option <M43> |
| | IP54 Option <M54> |
| | 10. Transport unit |

SINAMICS G150 (type A), continued

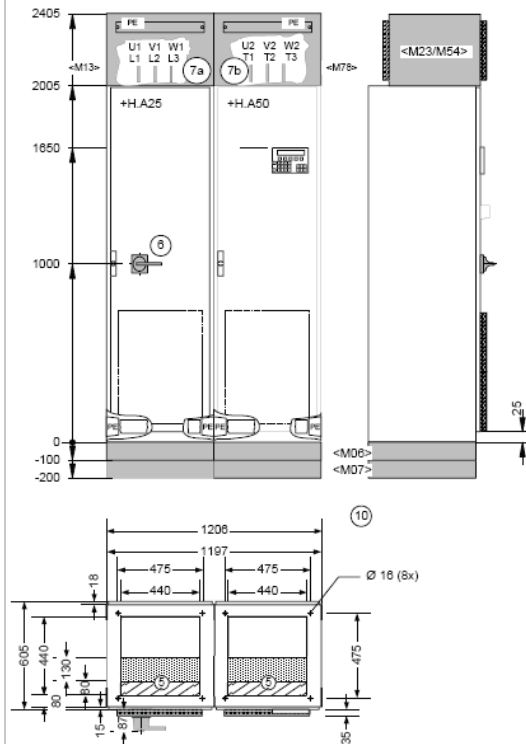
Dimension drawing 13:
380 V to 480 V 400 - 450 kW

Power supply connection from below, motor connection from below

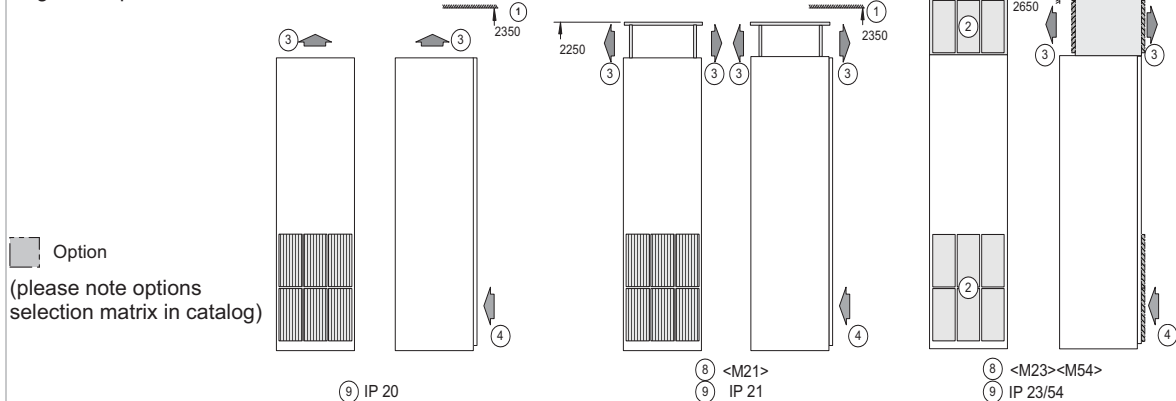


Dimension drawing 14:
380 V to 480 V 400 - 450 kW

Power supply connection from above, motor connection from above



Degrees of protection:



Legend:

- | | |
|---|---|
| 1. Minimum ceiling height for wall mounting | 7. Power connection (7a: power supply, 7b: motor) |
| 2. Ventilation grid | 8. Degree of protection option |
| 3. Air outlet area | 9. Degree of protection IP20 |
| 4. Air inlet area | IP21 Option <M21> |
| 5. Cables can enter from below within hatched area | IP23 Option <M23> |
| 6. Main circuit breaker, can be secured by padlock (option) | IP43 Option <M43> |
| | IP54 Option <M54> |
| | 10. Transport unit |

Dimension Drawings

Engineering Information

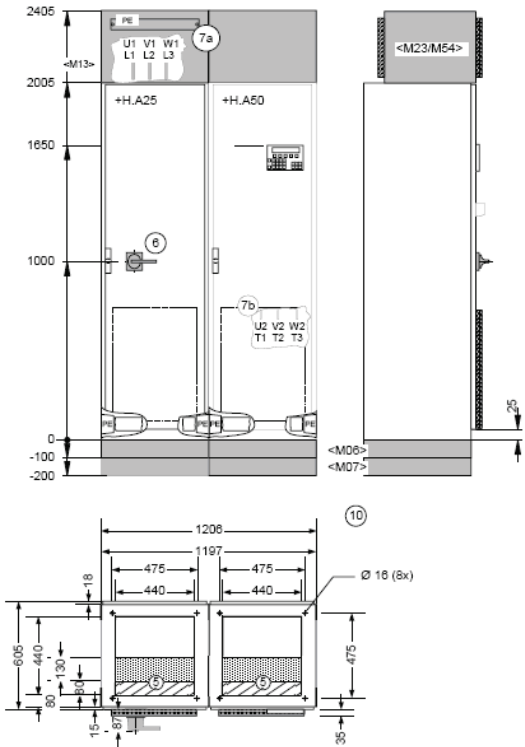
SINAMICS G150 (type A), continued

Dimension drawing 15:

380 V to 480 V

400 - 450 kW

Power supply connection from above, motor connection from below

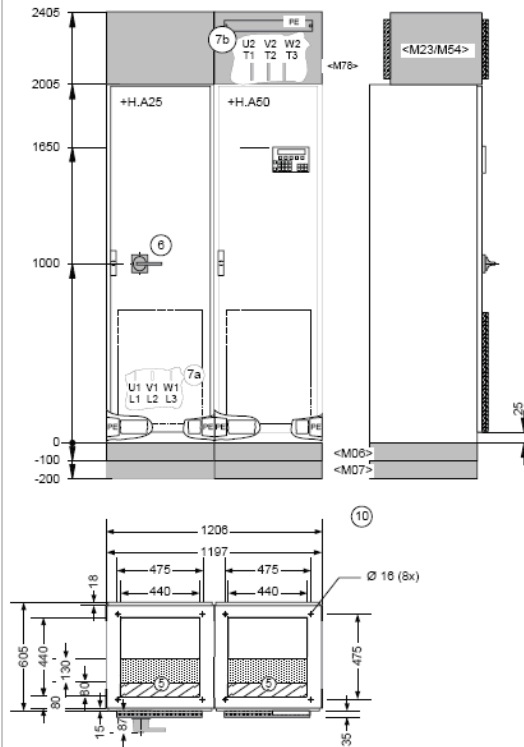


Dimension drawing 16:

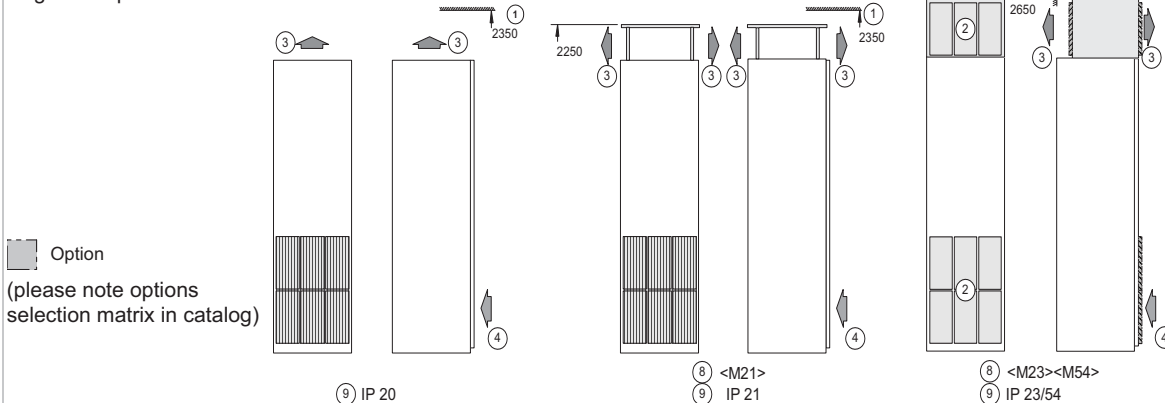
380 V to 480 V

400 - 450 kW

Power supply connection from below, motor connection from above



Degrees of protection:



Legend:

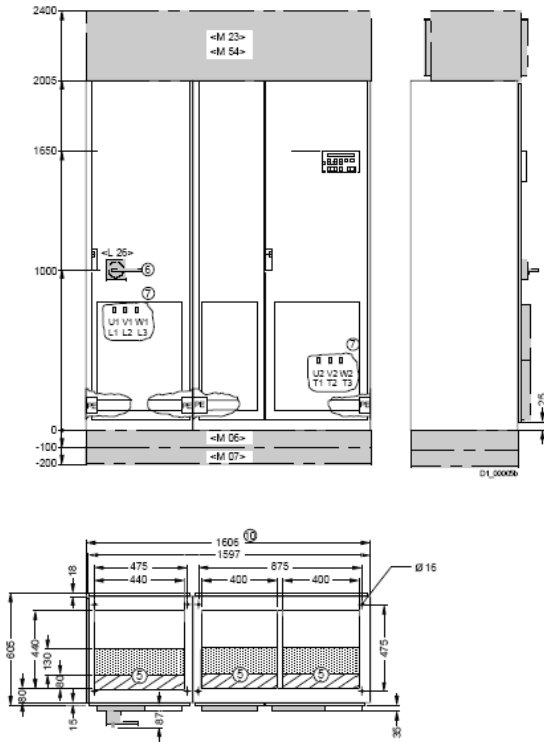
- | | |
|---|---|
| 1. Minimum ceiling height for wall mounting | 7. Power connection (7a: power supply, 7b: motor) |
| 2. Ventilation grid | 8. Degree of protection option |
| 3. Air outlet area | 9. Degree of protection IP20 |
| 4. Air inlet area | IP21 |
| 5. Cables can enter from below within hatched area | IP23 |
| 6. Main circuit breaker, can be secured by padlock (option) | IP43 |
| | IP54 |
| | Option <M21> |
| | Option <M23> |
| | Option <M43> |
| | Option <M54> |
10. Transport unit

SINAMICS G150 (type A), continued

Dimension drawing 17:

380 V to 480 V 560 kW
 500 V to 600 V 500 - 560 kW
 660 V to 690 V 710 - 800 kW

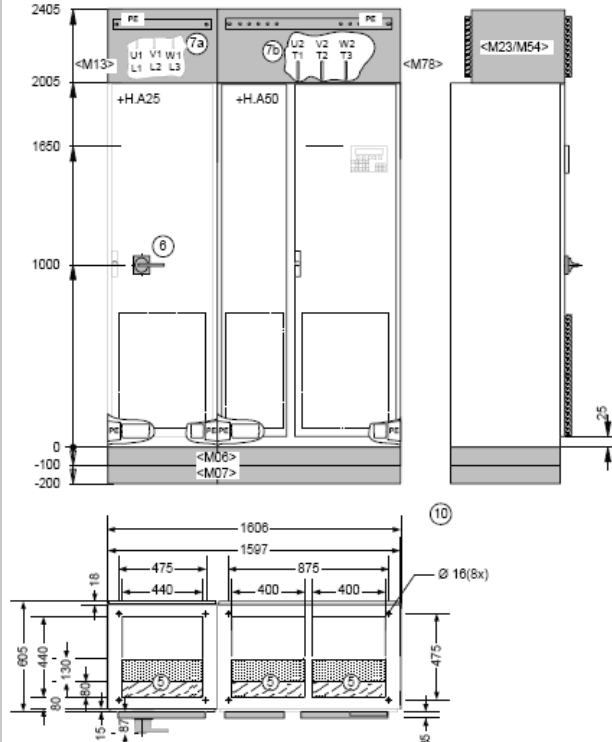
Power supply connection from below, motor connection from below



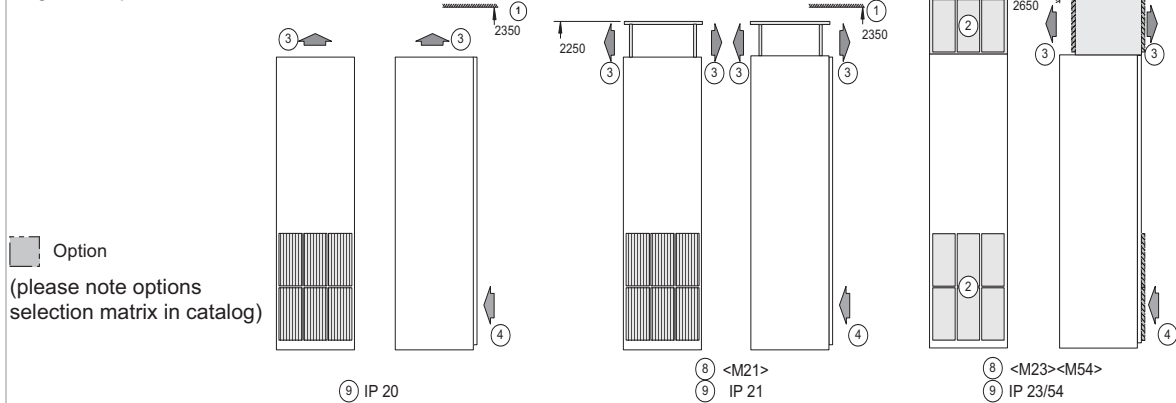
Dimension drawing 18:

380 V to 480 V 560 kW
 500 V to 600 V 500 - 560 kW
 660 V to 690 V 710 - 800 kW

Power supply connection from above, motor connection from above



Degrees of protection:



Legend:

- | | |
|---|---|
| 1. Minimum ceiling height for wall mounting | 7. Power connection (7a: power supply, 7b: motor) |
| 2. Ventilation grid | 8. Degree of protection option |
| 3. Air outlet area | 9. Degree of protection IP20 |
| 4. Air inlet area | IP21 Option <M21> |
| 5. Cables can enter from below within hatched area | IP23 Option <M23> |
| 6. Main circuit breaker, can be secured by padlock (option) | IP43 Option <M43> |
| | IP54 Option <M54> |
| | 10. Transport unit |

Dimension Drawings

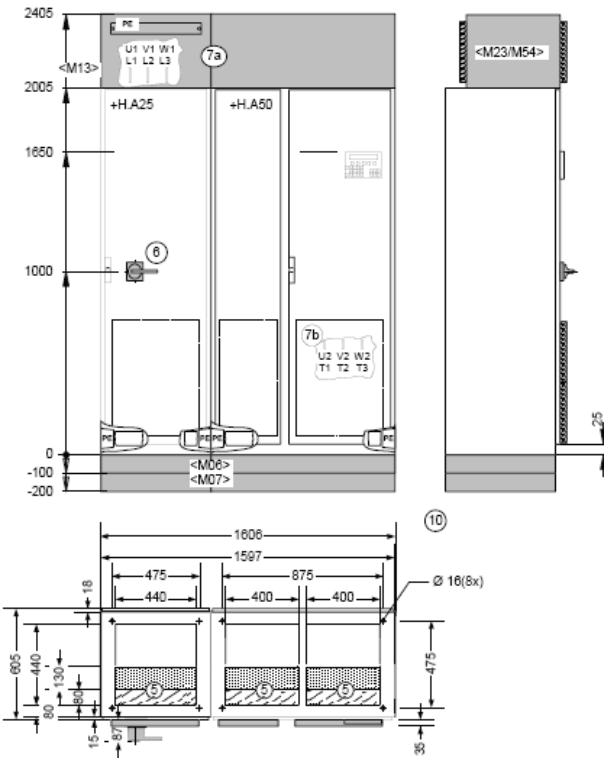
Engineering Information

SINAMICS G150 (type A), continued

Dimension drawing 19:

380 V to 480 V 560 kW
 500 V to 600 V 500 - 560 kW
 660 V to 690 V 710 - 800 kW

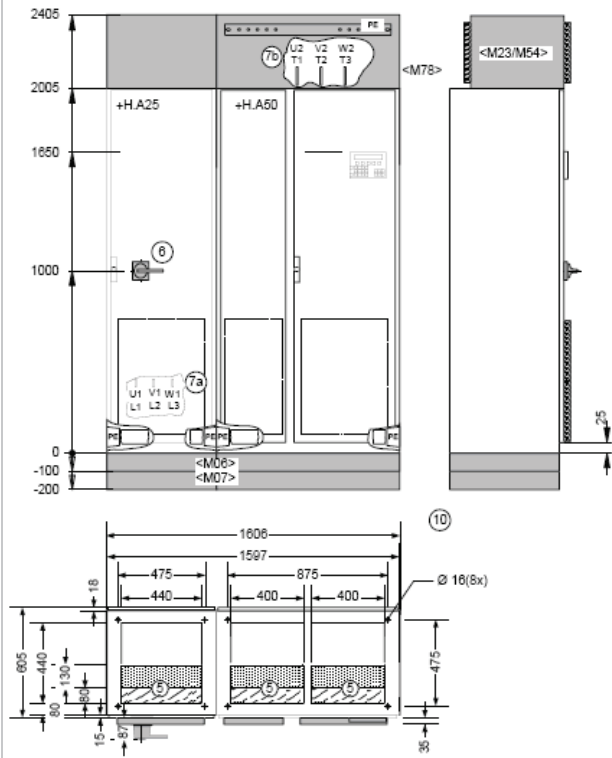
Power supply connection from above, motor connection from below



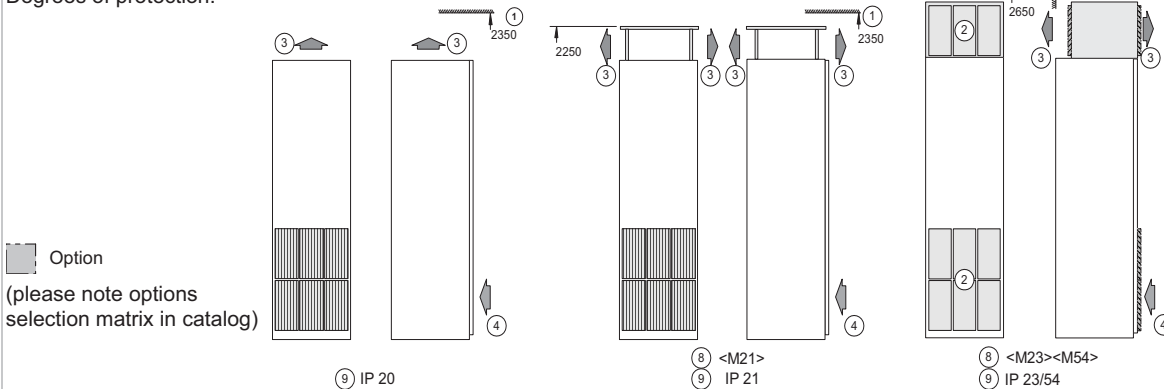
Dimension drawing 20:

380 V to 480 V 560 kW
 500 V to 600 V 500 - 560 kW
 660 V to 690 V 710 - 800 kW

Power supply connection from below, motor connection from above



Degrees of protection:



Legend:

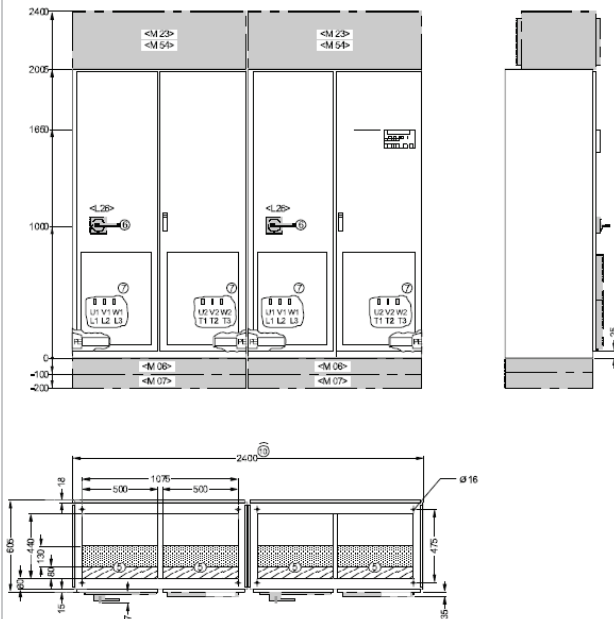
- | | |
|---|---|
| 1. Minimum ceiling height for wall mounting | 7. Power connection (7a: power supply, 7b: motor) |
| 2. Ventilation grid | 8. Degree of protection option |
| 3. Air outlet area | 9. Degree of protection IP20 |
| 4. Air inlet area | IP21 Option <M21> |
| 5. Cables can enter from below within hatched area | IP23 Option <M23> |
| 6. Main circuit breaker, can be secured by padlock (option) | IP43 Option <M43> |
| | IP54 Option <M54> |
| | 10. Transport unit |

SINAMICS G150 (type A), continued

Dimension drawing 21:

380 V to 480 V 630 kW
 500 V to 600 V 630 - 710 kW
 660 V to 690 V 1000 kW

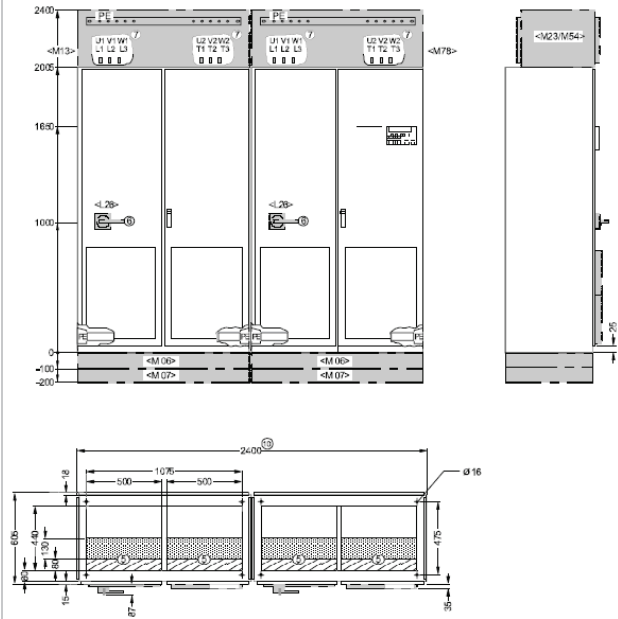
Power supply connection from below, motor connection from below



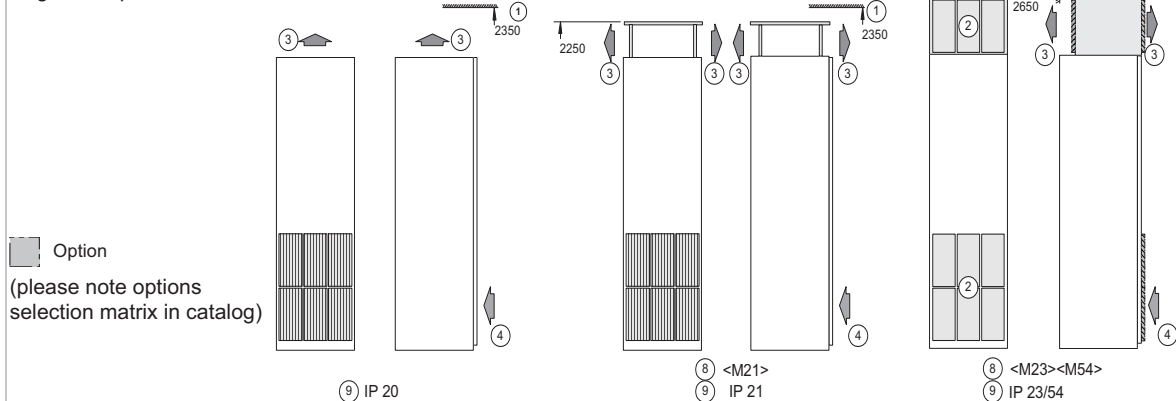
Dimension drawing 22:

380 V to 480 V 630 kW
 500 V to 600 V 630 - 710 kW
 660 V to 690 V 1000 kW

Power supply connection from above, motor connection from above



Degrees of protection:



Legend:

Dimension Drawings

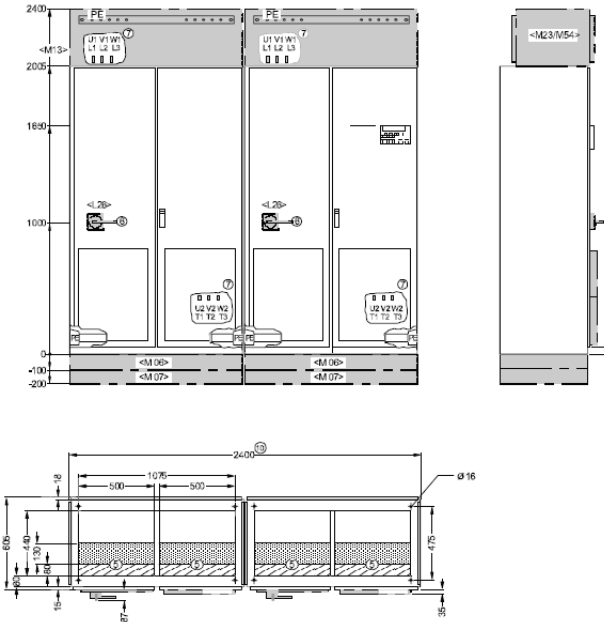
Engineering Information

SINAMICS G150 (type A), continued

Dimension drawing 23:

380 V to 480 V 630 kW
 500 V to 600 V 630 - 710 kW
 660 V to 690 V 1000 kW

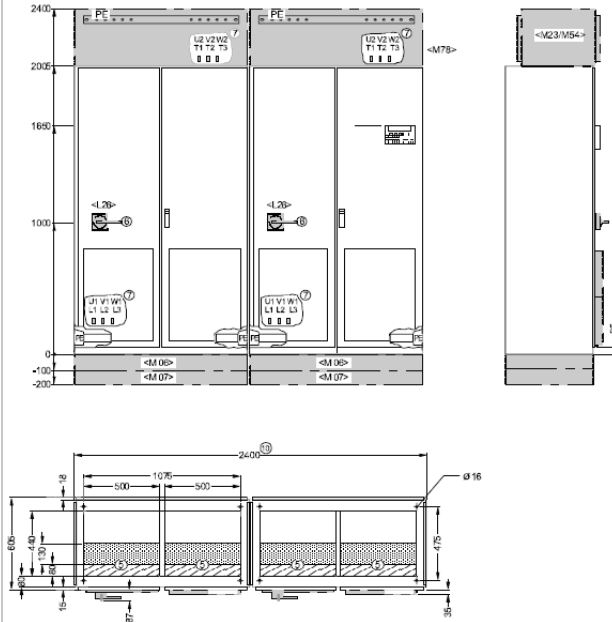
Power supply connection from above, motor connection from below



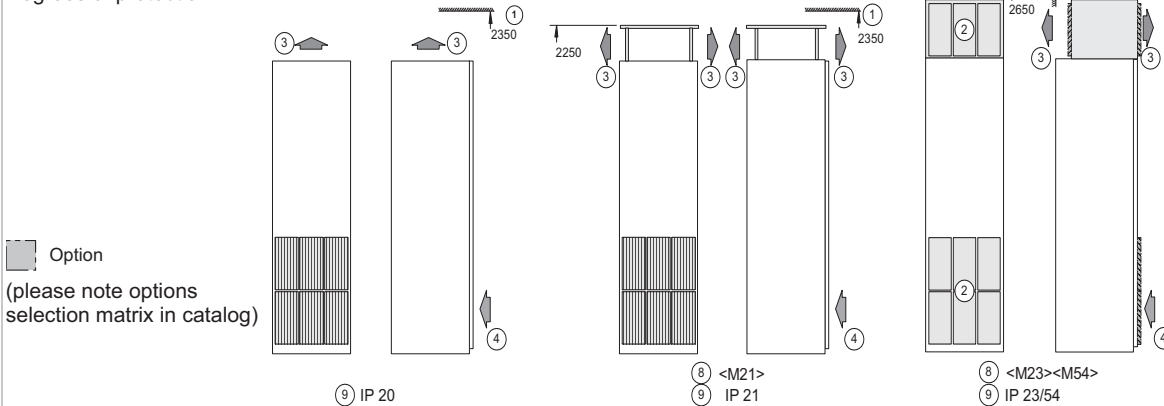
Dimension drawing 24:

380 V to 480 V 630 kW
 500 V to 600 V 630 - 710 kW
 660 V to 690 V 1000 kW

Power supply connection from below, motor connection from above



Degrees of protection:



Legend:

- | | |
|---|---|
| 1. Minimum ceiling height for wall mounting | 7. Power connection (7a: power supply, 7b: motor) |
| 2. Ventilation grid | 8. Degree of protection option |
| 3. Air outlet area | 9. Degree of protection IP20 |
| 4. Air inlet area | IP21 Option <M21> |
| 5. Cables can enter from below within hatched area | IP23 Option <M23> |
| 6. Main circuit breaker, can be secured by padlock (option) | IP43 Option <M43> |
| | IP54 Option <M54> |
| | 10. 2 transport units, each 1200 mm |

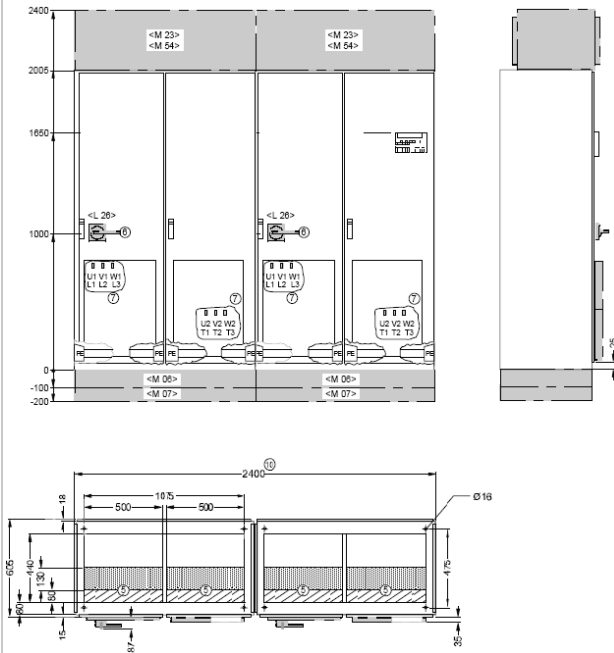
SINAMICS G150 (type A), continued

Dimension drawing 25:

380 V to 480 V

710 - 900 kW

Power supply connection from below, motor connection from below

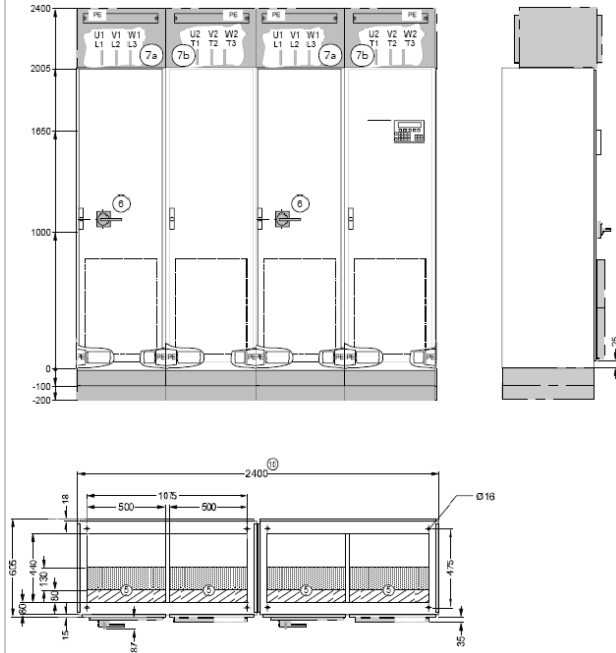


Dimension drawing 26:

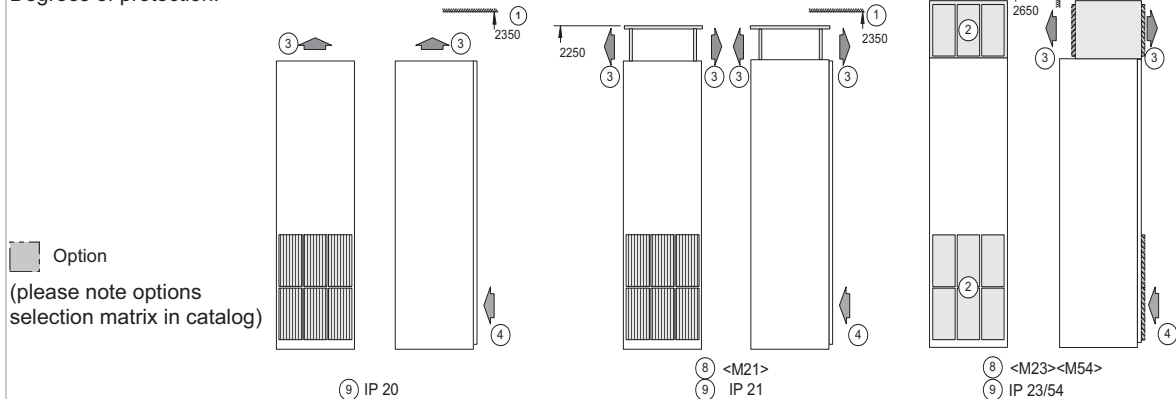
380 V to 480 V

710 - 900 kW

Power supply connection from above, motor connection from above



Degrees of protection:



Legend:

- | | |
|---|---|
| 1. Minimum ceiling height for wall mounting | 7. Power connection (7a: power supply, 7b: motor) |
| 2. Ventilation grid | 8. Degree of protection option |
| 3. Air outlet area | 9. Degree of protection IP20 |
| 4. Air inlet area | IP21 Option <M21> |
| 5. Cables can enter from below within hatched area | IP23 Option <M23> |
| 6. Main circuit breaker, can be secured by padlock (option) | IP43 Option <M43> |
| | IP54 Option <M54> |
| | 10. 2 transport units, each 1200 mm |

Dimension Drawings

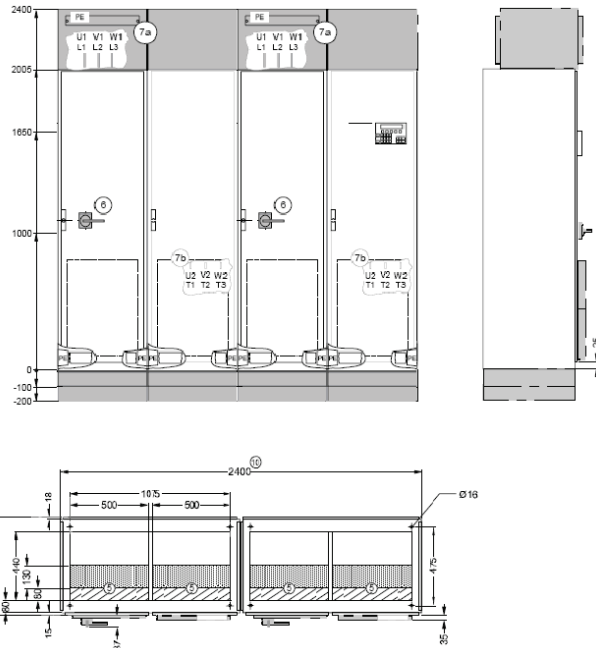
Engineering Information

SINAMICS G150 (type A), continued

Dimension drawing 27:

380 V to 480 V 710 - 900 kW

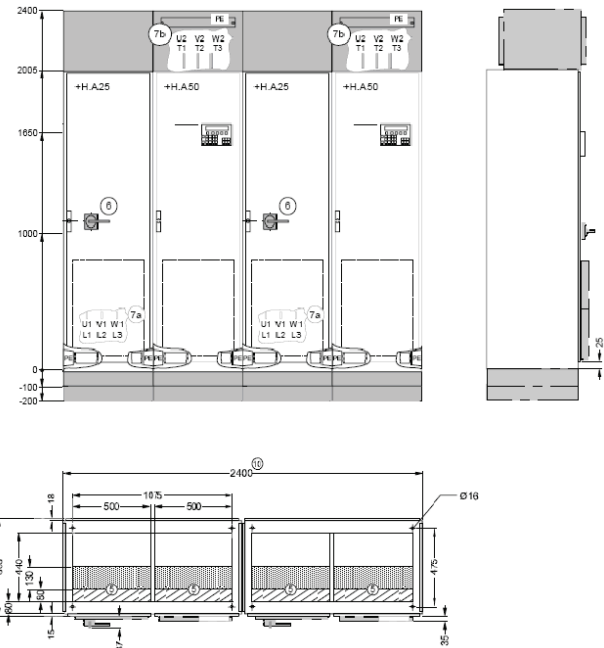
Power supply connection from above, motor connection from below



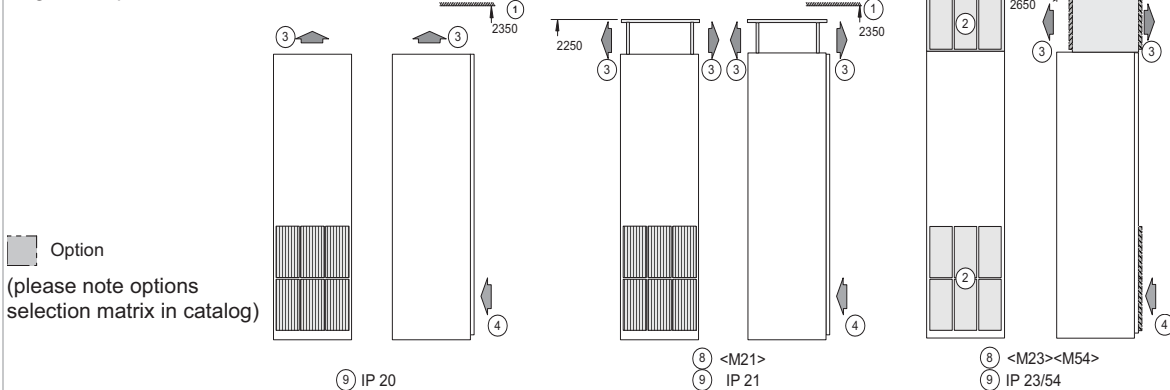
Dimension drawing 28:

380 V to 480 V 710 - 900 kW

Power supply connection from below, motor connection from above



Degrees of protection:



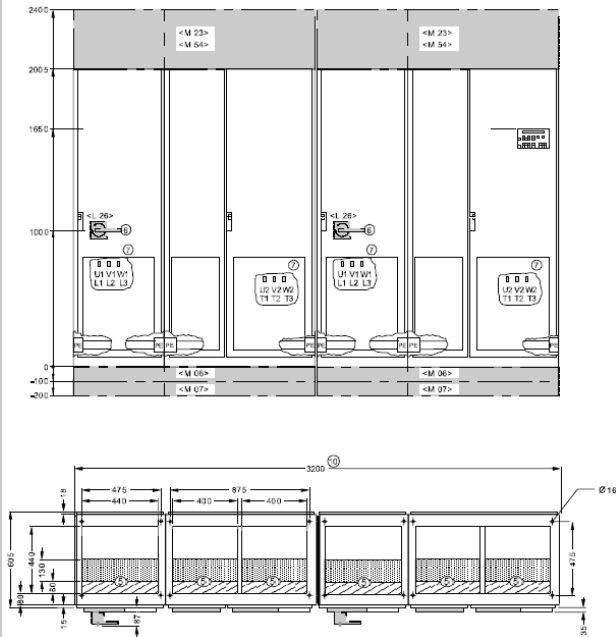
Legend:

- | | |
|---|---|
| 1. Minimum ceiling height for wall mounting | 7. Power connection (7a: power supply, 7b: motor) |
| 2. Ventilation grid | 8. Degree of protection option |
| 3. Air outlet area | 9. Degree of protection IP20 |
| 4. Air inlet area | IP21 Option <M21> |
| 5. Cables can enter from below within hatched area | IP23 Option <M23> |
| 6. Main circuit breaker, can be secured by padlock (option) | IP43 Option <M43> |
| | IP54 Option <M54> |
| | 10. 2 transport units, each 1200 mm |

SINAMICS G150 (type A), continued

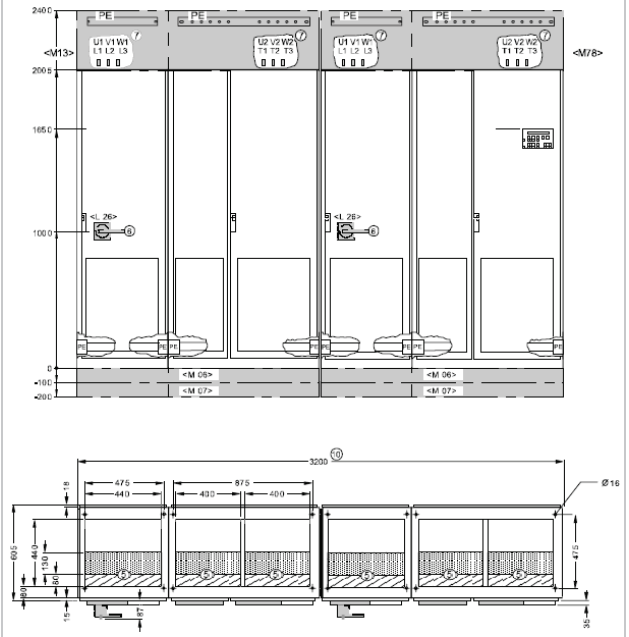
Dimension drawing 29:

500 V to 600 V 1000 kW
 660 V to 690 V 1350 - 1500 kW
 Power supply connection from below, motor connection from below

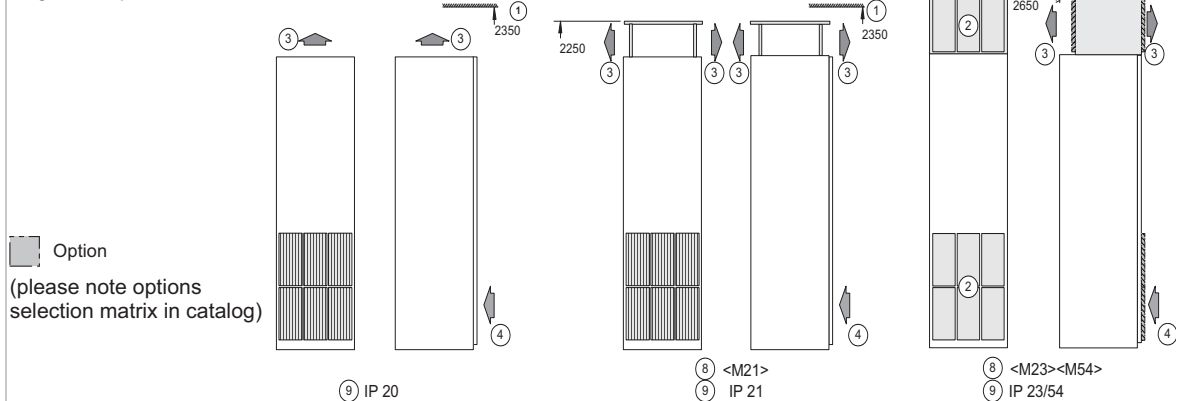


Dimension drawing 30:

500 V to 600 V 1000 kW
 660 V to 690 V 1350 - 1500 kW
 Power supply connection from above, motor connection from above



Degrees of protection:



Legend:

- | | |
|---|---|
| 1. Minimum ceiling height for wall mounting | 7. Power connection (7a: power supply, 7b: motor) |
| 2. Ventilation grid | 8. Degree of protection option |
| 3. Air outlet area | 9. Degree of protection IP20 |
| 4. Air inlet area | IP21 Option <M21> |
| 5. Cables can enter from below within hatched area | IP23 Option <M23> |
| 6. Main circuit breaker, can be secured by padlock (option) | IP43 Option <M43> |
| | IP54 Option <M54> |
| | 10. 2 transport units, each 1600 mm |

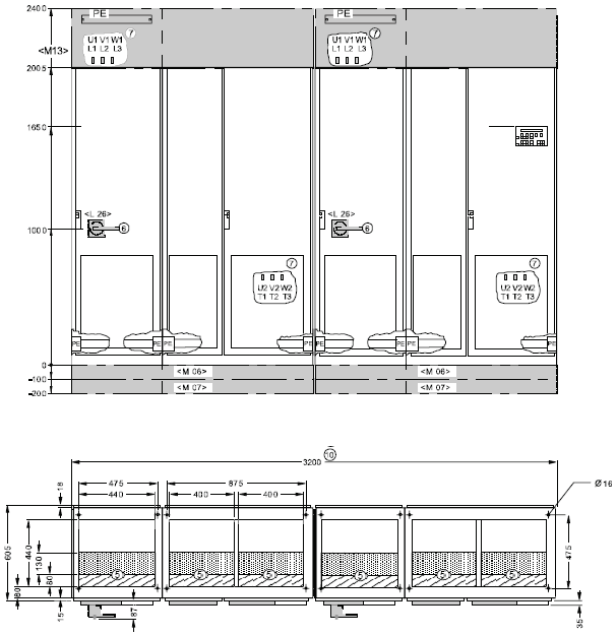
Dimension Drawings

Engineering Information

SINAMICS G150 (type A), continued

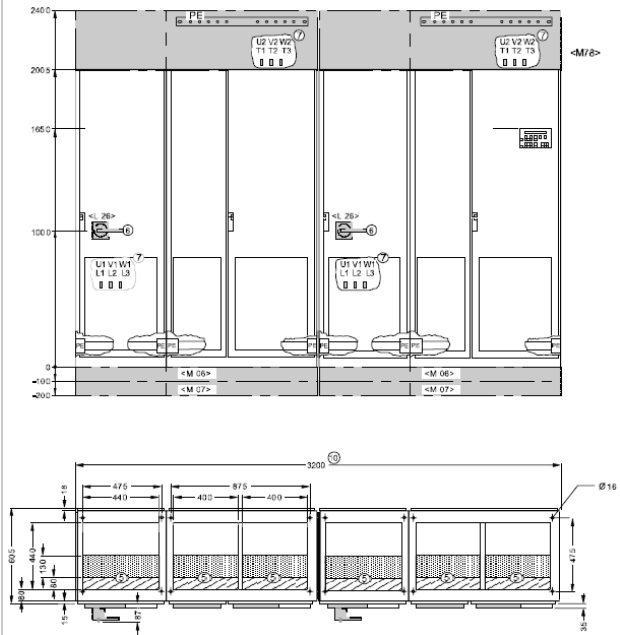
Dimension drawing 31:

500 V to 600 V 1000 kW
 660 V to 690 V 1350 - 1500 kW
 Power supply connection from above, motor connection from below

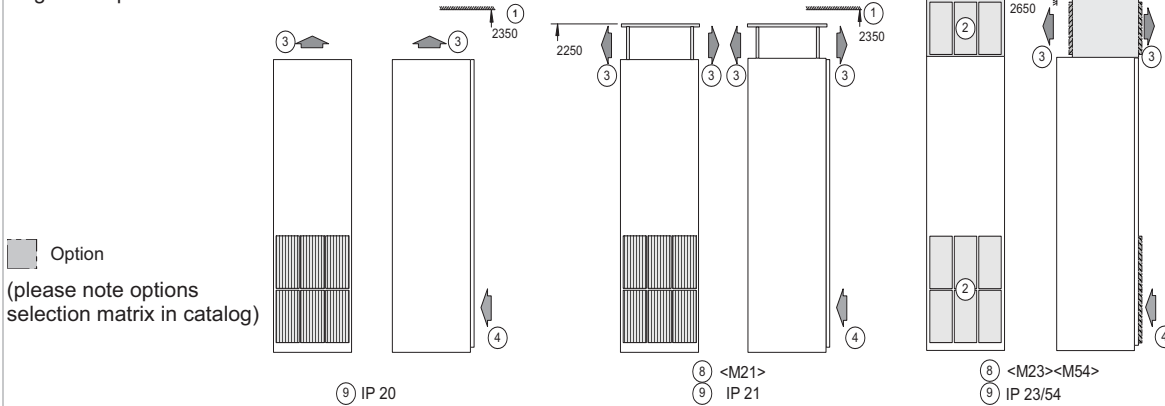


Dimension drawing 32:

500 V to 600 V 1000 kW
 660 V to 690 V 1350 - 1500 kW
 Power supply connection from below, motor connection from above



Degrees of protection:



Legend:

- | | |
|---|---|
| 1. Minimum ceiling height for wall mounting | 7. Power connection (7a: power supply, 7b: motor) |
| 2. Ventilation grid | 8. Degree of protection option |
| 3. Air outlet area | 9. Degree of protection IP20 |
| 4. Air inlet area | IP21 Option <M21> |
| 5. Cables can enter from below within hatched area | IP23 Option <M23> |
| 6. Main circuit breaker, can be secured by padlock (option) | IP43 Option <M43> |
| | IP54 Option <M54> |
| | 10. 2 transport units, each 1600 mm |